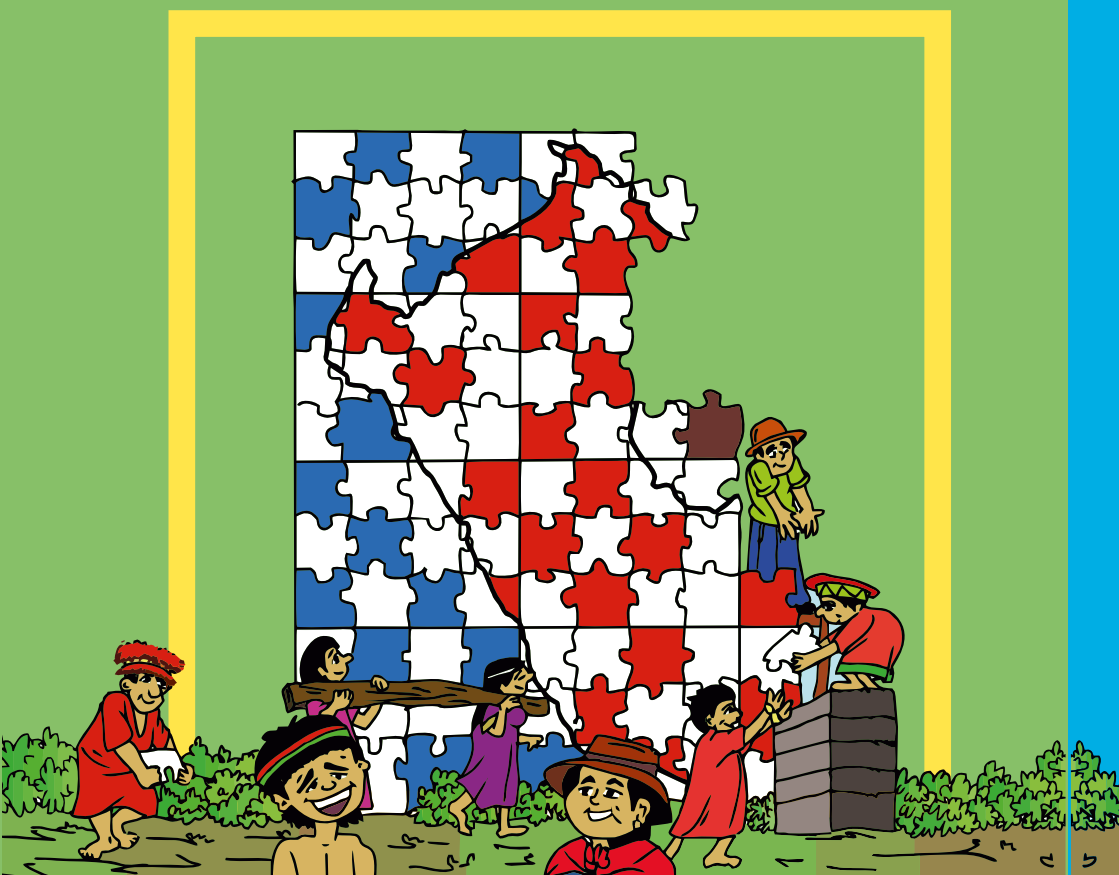


PENEN NISHIAPATUNA KETERINPUA KANPUA  
YA'UWANPUA INARAN YA'WEREWAKE YA'WEREWAPITAMARE

# TIRIHCHU INARAN NAHTETATE NI'KAKASU NUITAMARE YA'UTERINPUA



PODER JUDICIAL  
DEL PERÚ



PROGRAMA PARA LA COHESIÓN SOCIAL EN AMÉRICA LATINA



Ministerio de Justicia  
y Derechos Humanos

Dirección General de  
Defensa Pública y  
Acceso a la Justicia

**Tirihchu inaran nahtetate  
ni'kakasu nuitamare ya'uterinpua**

**Poder Judicial del Perú  
Ministerio de Justicia y Derechos Humanos del Perú  
Oficina Nacional de Justicia de Paz y Justicia Indígena  
Dirección General de Defensa Pública y Acceso a la Justicia  
EUROSociAL, programa de cooperación de la Unión Europea con América Latina para el  
impulso de la cohesión social.**

**EDICIÓN:  
Oficina Nacional de Justicia de Paz y Justicia Indígena**

**Edificio “Carlos Zavala Loayza”, Jr. Manuel Cuadros 182, Lima – Perú  
Teléfono: 511 4101010 Anexo 14348 email: [contacto@onajup.gob.pe](mailto:contacto@onajup.gob.pe)  
[www.onajup.gob.pe](http://www.onajup.gob.pe)**

**Lima – Perú  
2015**

**La presente publicación ha sido elaborada con la asistencia de la Unión Europea. El contenido de la misma es responsabilidad exclusiva del editor y en ningún caso se debe considerar que refleje la opinión de la Unión Europea.**

**Hecho el depósito legal en la Biblioteca Nacional del Perú...**

**Diagramación: José Rodríguez Casachahua  
Traducción castellano-shawi: Wilder Napo Huayunga, Miller López Santillán**

# A'NUNAMEN

## NIA'NURINSU 5

### KAPITURU A'NARA. ¿UNPUINTA NIHKAKASU MA'SHA NUYA NIHKAKAMARE? 7

1.1	Piyapi acha'erinsu	9
1.2	Ma'sha nahtantupisu	14
1.3	Kirihka tuhkumintumare anuyahtupisu	17
1.4	Ya'muresu, ya'panesu	21
1.5	Sanapi, sanapia'wa, wa'washa ku nuyawe ya'werinsu	27
1.6	Uhshake ata'tupisu, ku nuwantapirinwe ku naniyahtarapirinwe pi'ihpinen	32
1.7	Tehpaterinsu	37
1.8	Chimipi yanupisu, yahchapisu	41
1.9	Munshiwapisu	45
1.10	Nara na'kun, na'kun uhkuwipisu	48
1.11	Ya'ipi sha'wirinsu	52

### KAPITURU KAHTU. ISTATU PIRUANU NINANUA'WARU'SARE 55

2.1	Piru nanan anuyaterinsu	57
2.2	Istatu piruanu Ninanua'waru'sare	62
2.3	Unpu anuyatapunta nanan istatu piruanu ninanua'waru'sake	65
2.4	Wa'anua'sa sahkatu ya'wetupisu nihkakaisu, piyapiru'samare ninanua'waru'sake	71
2.5	Wa'anua'sa na'kun nanan ya'wetupisu ku nu'tehken sahkatu nihpachinarawe	73

<b>KAPITURU KARA PIYAPIRU'SA, NINANUA'WARU'SANTA TIRIHCHUSAHKATU NIHKAKAISU YA'WETERINSU</b>	<b>75</b>
3.1 Sahkatu nihkakasu istatu kanpu piyapiru'samare inaran ninanua'waru'samarenta	76
3.2 Tirihchu ya'weterinsu kanpu piyapi'sa, ninanu ya'weteru'sa	78
3.3 Tirihchuya'weterinsu ninanu ya'weteru'samare	88
3.4 Kanpu piyapi, ninanua'wanta sahkatu ya'weterinsu	99
 <b>KIRIHKA WENTUNU'SA</b>	 <b>101</b>
Nanan tihkinamen:	102
 <b>NISHA, NISHA KIRIHKA NINESU</b>	 <b>107</b>
 <b>A'NA KIRIHKARU'SAKERANTA UHKUWIPISU</b>	 <b>121</b>

# NIA'NURINSU

Ihsu karihka, A'nurarin Ley teninchachin nu'tehken, ni'tun pa'sarin kanpu piyapiru'samare ninanu ya'weteru'samare, a'nataweri nahpunin nanani mahpachina, ya'wetupachina; yunkikaisumare unpuanuyahtakaisuna, unputimantatakaisu, tinunsiatakaisuna, yawepike, taweri we'ninke. Nihpi, nishipi, kanpu piyapi'sari nuntakaisumare, nahpumantarawatun wa'waru'sari, sanapia'waru'sari, nanua'waru'sari, wi'napia'waru'sarinta nuntakaisumare. Inake nuwitakaisumare tirihchunena inaran unpu ya'wekaisuna ma sahkatuta nihkakaisu ya'wetupi. Nahpumantarawatun ihsu karihka kahtawaunkema, aya'karirarinkema na'kun, na'kun lstatuke. Ku inaihchinwe, a'nataweri, niachintakamare, sahkatu ninewake, yamutewa ninunterewake, ku nihpun sirwiaunpua kapahsitasiunke, inake nunkakaisu nihpachin kanpua tirihchunenpuamare, insetana nani ninanua'wake ya'werewake.

Taweri pa'ninke ihsu karihka nuya ni'pachina, nuya nuhshitumapike kenantumapachina, nahpuruware ni'puna nu'tehken nuninsu, nahpuwinahchin kanpu piyapi'santa tirihchu a'nawitapuchin piruanuru'sapuchin inawanta, nahpuapunawe nuya nuya puchin inawasu ya'wetupi. Ina tirihchu nu'tehken, nuya nuyapuchin nininsu kanpu piyapiru'samare. Ina kenanariwa irahkapanka ninanuru'sa, nisha, nihsha paiseru'sa yamurawatuna nunpi kanpu piyapiru'samare, inake Pirunta ninin, nahtanterin, nituhterin.

Inachi ina Kunpiñu 169 OIT, itupike. Inake nuninsu unpuwin Tiriichuta nihka ya'wetupisu kanpu piyapi'sa, nihsha nihsha pariichike ya'wepisupitanta, ina ihu kirihkake nuninsu kenanariwa.

Ihu kirihka taweri pa'ninke nanitere ahkaete anuyahtakasu, kanpita tuhpatama, nunteramake ku intintipatumawe nishitupisu, ahkete anuyahtakasu kanpita tuhpatama.¬

# KAPITURU A'NARA

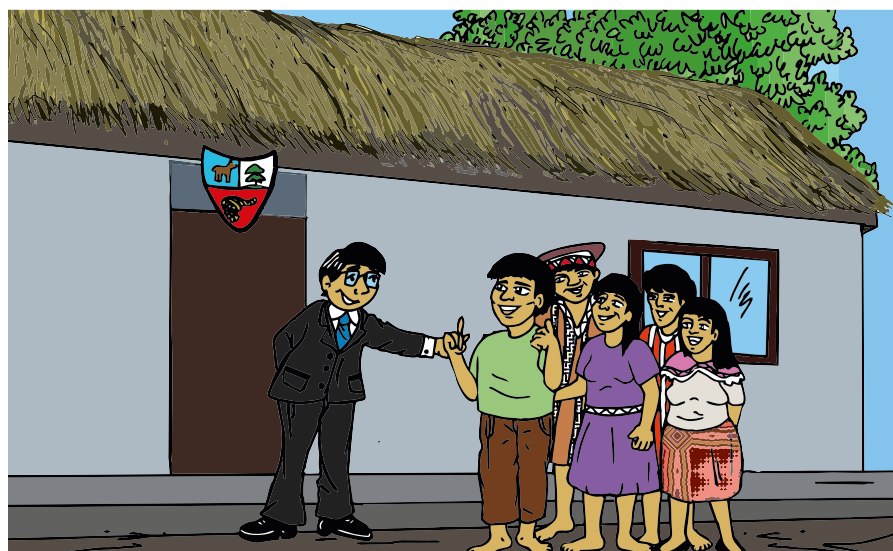
¿Unpuinta nihkakasu ma'sha nuya  
nihkakamare?

lhusu kapituruke kenanapun unpu nihkakamasuna, ma'suna nihpun lstatu keterinkensu, a' nutarinkensu Tirihchunen pa'puyakamasu, ku kamamarahchinwe wamirianenmarenta inaran ninanua'wamarenta insesuna ya'weran.

Panka nanan a'nataweri ya'wetupachinken, unpuinna a'nawitapuchin, inauchachin kemanta nihke. Nihpunawe nihtuhtapun ma'suna nihkakamasu inake iterinensu, Suntaru, Wise, ku nihpun Apukatu itupisu.

Nuya nituhtakasu, aya'panpachinen, awatunen pe'sha, pe'sha itupachinen, ku nuwantapiranwe uhshake ahtatuwachinen, wamirianen, tehpaachina ina piyapi tahshinan peike na'kun pi'i pa'sarin, ku karihka anuyahchahtasuiwewa'anu'sa, ina piyapi mahkapuna, nanan anuyahtakaiware, pihpipun ku nihpun ku pihpiarinwe.

Nahpatun ku nunpin tinunsiatapunwe, ama kemaurchachin niana'intakamarewe, **tuhpinakeran** apaweretupachinen, kemahsaa'tahshinan peitupachinen nunpinansumare.





# 1.1 Piyapi acha'erinsu

## ¿Ma'ta ina hábeas Corpus itupi?

Putiri Utislar nahtanesu a'na piyapi acha'ehkamareama ana'intakaisumarewe, ku ahkete tewenrinsumarewe.



Ihsupuchin a'nataweri ya'wepachina:

- A'na piyapi manin suntaruri ku na'kun tewepirinwe, ku kunawe nihsarin ni'tun, ku Wise manta tuhpirinwe.
- A'na kanpu piyapi tahshinan peitupachina, ku peinen na'kun taweri wanitupachinwe.
- A'na piyapi ama itakaimarewe sha'wichinake, nihtuhtakasu ku interanta itapunpuwawe sha'wichinake unpuransu, teweransu. Nituhtakasu ma'ta tenin Ley nihka: Ta'teke, ama nunkesu ma'shamaresu kepapachinen, nanan kaniamasu ya'werin

- A'na piyapi ayapachina, inake Istatu ku pa'yahtaupachinwe, ina nihkamare

Inamaresu ku Apukatu nuwanterewe, nuya kanpuranta nihkakasu.

Ihseke a'nutarinen, nuwiteke unpuinketa inpuchin nahtanteresu nihkamasu ya'werin:

### **A'nataweri ku yunkiahsewe ma'sha pahsarewasu:**

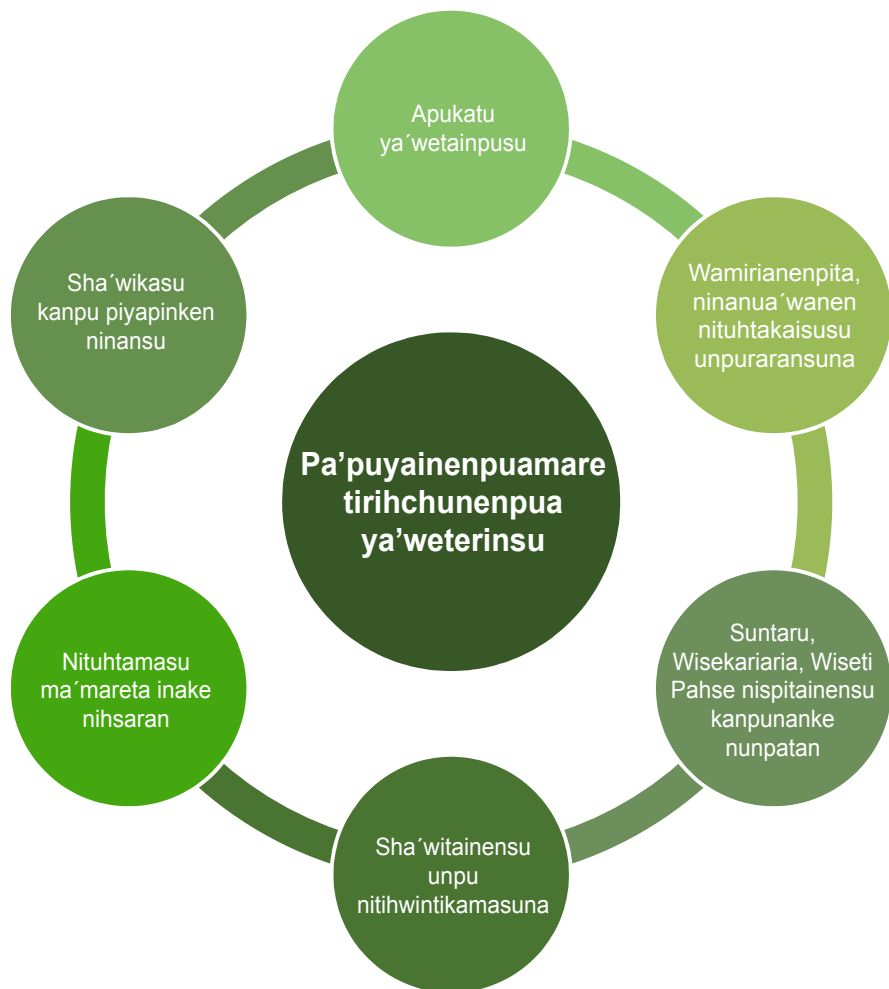
**Mauru i'wa simana na'werinke suntaruri manin, ku mahku ina piyapi tuhpirinawe tuhkumintu ku ichi iraterinwe ni'tun**

Mauru pihta pihkeran pakasu suntaruri manin, mahsawatun keparin Kumisariya'pa, ku tuhkumintu ichi iraterinwe ni'tun, nimara kahtu taweri nihsasu ayaterinsu ni'tun.

Suntaru tenin ihisu piyapi ku nininen ya'weterinwe RINIKE, ina yunihtakaimare inake nihpun kenantakaiware tuhkumintunen. Nahpatun ihisu piyapi tuhpinan nahtanatarai tuhkumintunen.

Ina piyapi ku na'kuntewerinwe, nituhtakasu, inake Wiseti Pahse a'naruahchin tehkapun ihisu piyapi uhkuwiku inshateranta we'in acha'ehki'in.

## ¿Insuwitanta nihka tirihchunen ya´weterinken inake acha´erinkensu?



11

Nahpumantarawatun nituhteke ihesu:

- Ina acha´einensu inake nanitere nihkakasu nishihpinan ku nihpun nanankeransa, ina wa´anu´sake itawisu: Wiseti Pahse.
- Suntaru naniterin mahkainkensu, ya´wepachin nuninsu Wiseti Pahse, nimara ma´sha teweraran kenanpachinen, kenayatupachinen nahpuruware nanitupi mahkainensu.

## ¿Ma sahkatuta nihka nihkapun ina acha´erinensu taweri?

Nahpuru taweri piyapi inaura niacha´ehkasumare, ku nihpun a´nawitamare ihsupuchin nituhtakasu inapuchin nihkamare:

Suntaruri mahpachin ku inkariteranta mahku ina piyapi ituwirinawe mahpachina, ku ma´sha tewerarin kenanpirinawe mahpachina, ku nihpun ma´sha nahpunin nihsahpirinwe kenayatatuna mahpachina, inautatuna kepawachina, tahshinan peike ina piyapi inake ihsupuchin nihpun. Ku nihpun Apukatu nahtanakasumare unpu unpuatunsuna nanan anuyahtakasumare.

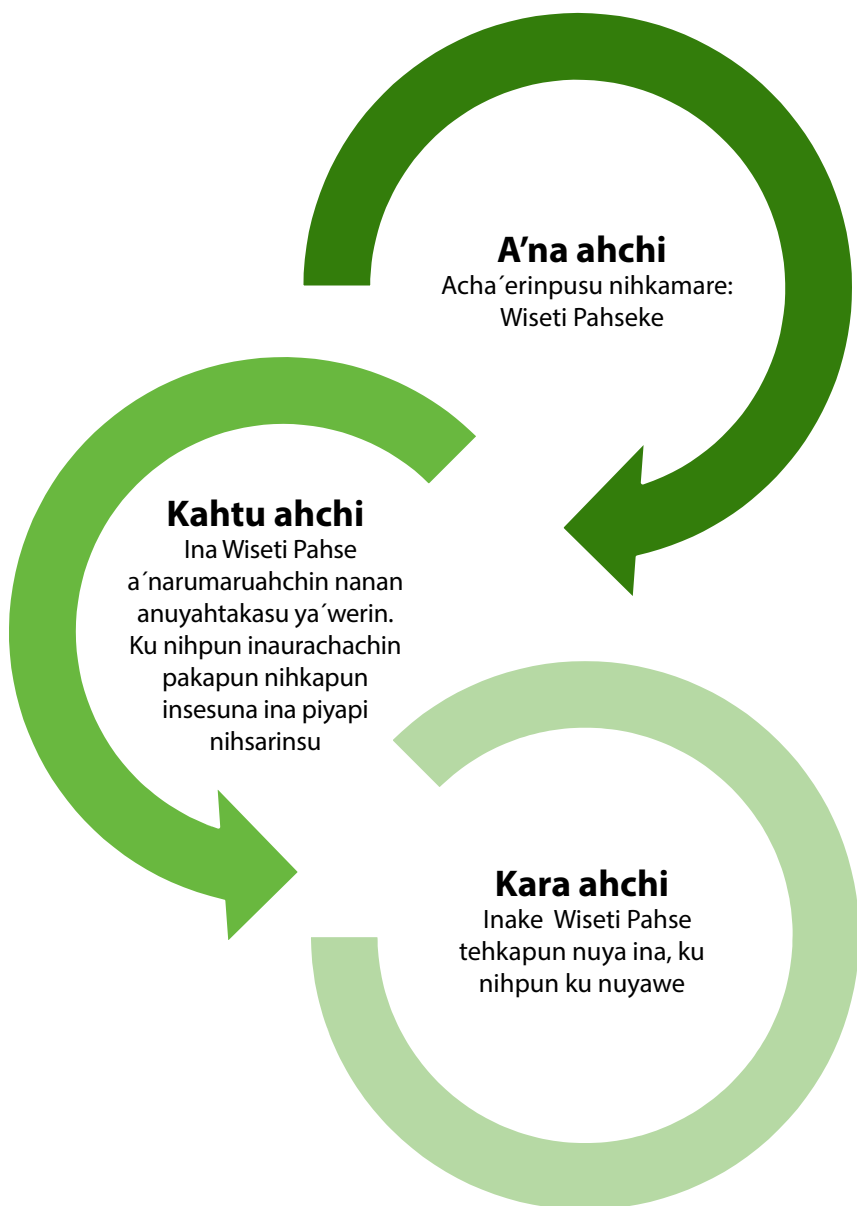
Wa´anu´sá ketakamare nanan nuyah intintikaimare unpu nanpirewasuna, unpu ya´werewasuna, ma´pitata nahterewasu kanpuasu ninanua´wanenpuake kanpu piyawinpua, nahpapunawe yunkikasu nihkamare ina piyapi inauchin mahpisumare.

Nuyahsha sha´witakamare Wa´anu´sá ina kirihkake nishihkaimare, nihsapike akukai-mare ku inaurinpuchinwe, nihkakamare, ina piyapi mahpiké, ku nihpun tahshinan peitupi. Inamare imahkasu Mauru nitupisupuchin. ¿Unpuahsuta mahpisu? ¿Ma´marechachinta Suntarurisu manin nihka?



## ¿Insuta inakirihka nine acha´erinpusu nihkakamare?

Unpukasuna ina ihseke a´nutaranken:



## 1.2 Nahtanteresu pa' puyainenpumare, ka'tanainenpumare



14

### ¿Ma'ta ina garantías?

Wa'anú'sake nahtateresu pa'puyainenmare, ka'tanainenpumare nanpiresumare, ya'weransumare, inshaterantaku nuyaweitupachinkera, ya tehpaachinken inawa pa'puyainpusumare naputerinenpusumare kema tirihchu ya'weterinkensu nanpikasumare.

lhperasu a' nuchinkema unpurusuna ina nahtantapumapa'puyainemasu, ka'tanainemasu:

## **A' nataweri ma'sha pahsarewasu:**

Nuwise nani taweri Kuansha nu'wirahrin, nani nu'wirinke tehpaparanken iterin. Naputerin pihkeran, nani tahshi, nani tahshi Nuwihsesu Kuansha painenke paatun Kuansha weehshasu yah ninarin tehpakamare. Nahpumantarawatun a' nataweri nani kahtu, kahturuawerin ku Kuanshari tewetupirinwe. Inake aweatun iterin a' nataweri kankan yunkiraran, a' nataweri kankan chinutaran iterin. Naputuwachina Kuanshasu Nuwiseri na'kun yunkirin, yunkirawatun tenin makena teweterawepera kasu Nuwise pera, tehsawatun yunkipirinwe ku ya'werinwe teweterinsu, ku nu'tenwe, ku unpuuteranta Nuwisere ni teweterinsu ya'werinwe.

15

## **¿Ma tirihchuta, ina nahtantarinsu pa'puyakaimare ya'weterin?**

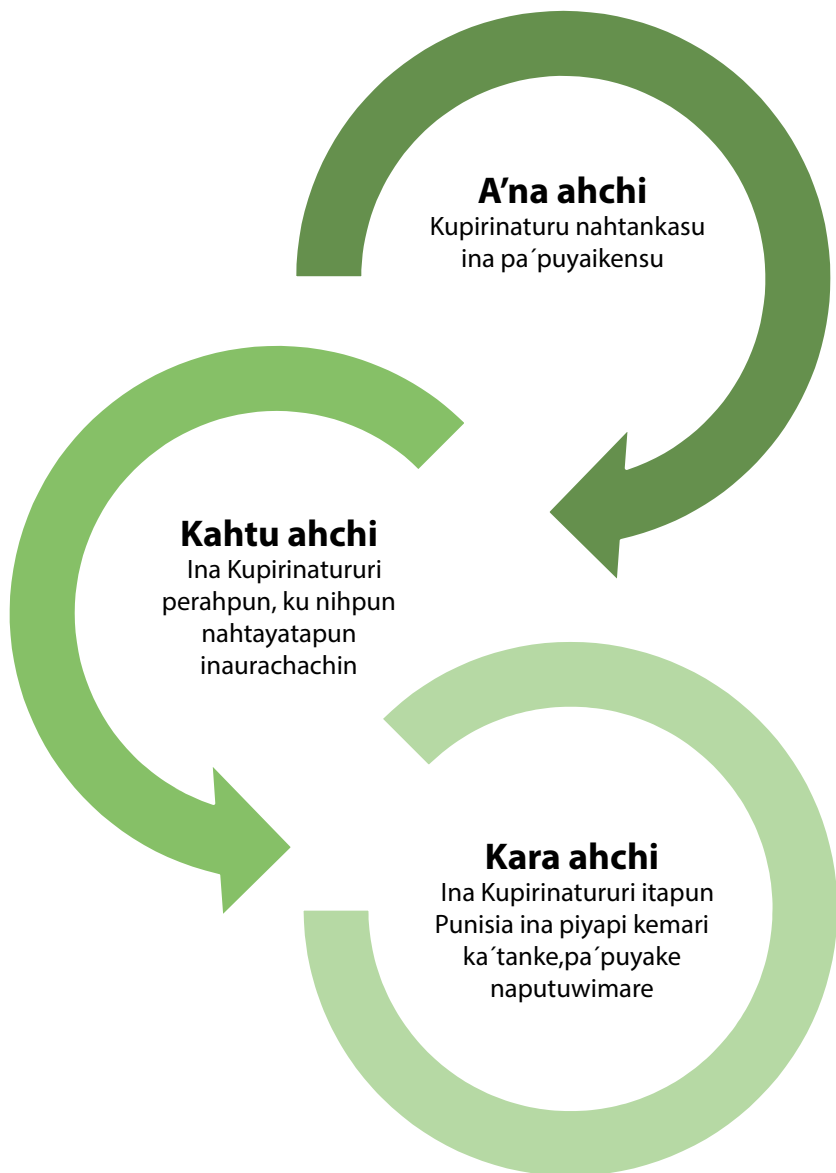
Ina piyapi nahtantarinsu pa'puyakaimare ya'weterin tirihchu a'narumaruahchin ahtintikaisu, nuya ya'wekamare, nuya nanpitakamare ya'werinke, ma'sharu'santa ya'weterinsumare.

## **¿Ma sahkatuta nihka nihkapun ina piyapi pa'puyakaisumare, ka'tanakaisumare nahtantarinsu?**

Ina piyapi nahtantapun pa'puyakaisumare, ka'tanakaisumarete-wenchachin inapuchin nanan nihpachin. Ku nahtantapun-wepa'puyakaisumare, ka'tanakaisumareku nanan ya'wepirinwe, inaukasu ku nuyawe. Kunanan tuhpinan uhkuwikamarerahchinwe insuaresuna ninu'wiatuna, niaweatusa ya'werinsumarerahchin ina nihkapun.

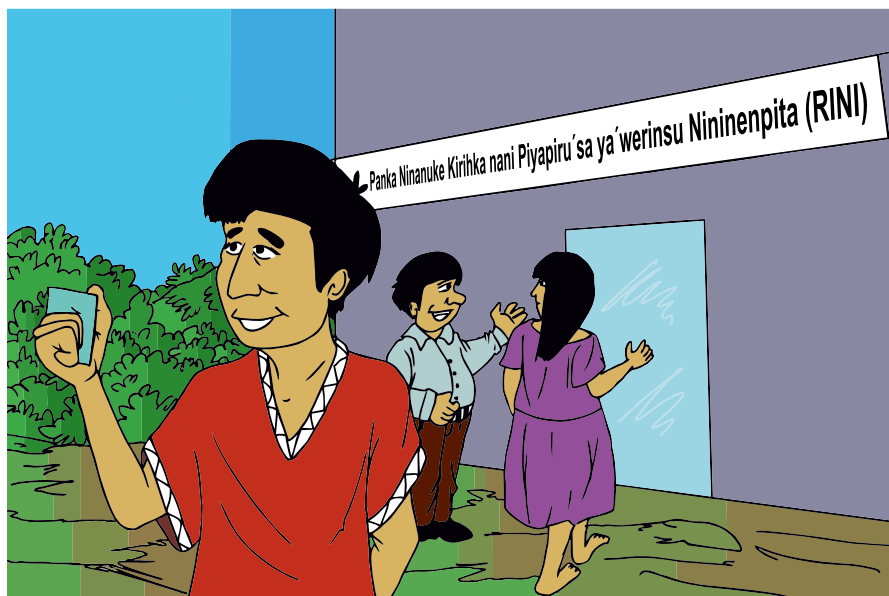
## ¿Insuta ina kirihkanine nahtantakamare pa'puyainenpusumare, ka'tanakainenpusumare?

Unpukasuma ina a'nutarankema:





## 1.3 Tuhkumintumare kiritika anuyahteresu



17

### ¿Ma'ta ina DNI?

Ina tuhkumintu itupisu, inare'kenpua naniterewa nia'nukamare, Wa'anu'sake, inake nanitere Tirihchunenpun apa'takasumare, nahpumantarawatun suhwerakamarenta wa'anenpua wayunamare Istatumare.

Nituhtawa ku tirihchunenpua inakerahchin ya'werinwe, ku'sunta tuhkumintu ya'wetuwirinpuawe tirihchunenpuasu na'kun, na'kun pa'terin, na'kun, na'kun pariterin. Nihpunawe na'kunkenpuwa piruanunpua ni'tun ina tuhkumintu ya'weterinpua ninuwitakamare ihstu Istatuke ya'werewasupita.

## ¿Unpuruta Tuhkumintumaresu kiritka anuyahtariwa nihka?

A'narumaruahchin, nani shunka puhsa pi'i ya'wetupachinpua. Nihpirinwe ihpera tinpuru'sakesu ya'yuwi wa'wahsharu'santa nani wa'watupachinara, wi'napi'santa ya'wetupi. Inawanta nitututapaimare unpu ya'wetakaisuna taweri we'ninke.

Inpitasuna ku ya'wetupisupitawe uhkuwikaisu ya'werin. Nani ya'wetupisuwitasu inawanta nihkakaisu ma taweriru'sakesuna minserarinsu, pa'terinsu taweri ina tuhkumintukechachin nishipi nihkakasu, ama ku'wanayakasumarewe. Ina aya'werekasu, a'na nahshauhkuwikasu ya'werin.

Ina kiritka anuyahtere RINIKE. Nahpumantarawatun inawanta na'kun sahkatupi ninanua'waru'sake, ya'yuhpi piyapiru'sa tuhkumintuwankaisumare.

Na'kun Munisiyuru'sa kiritka anuyahtupi RINIRE, a'naruahchin ninanua'waru'sakenta piyapiru'sa tuhkumintu uhkuwikaisumare.

## ¿Unpureta Wa'anu'sake ku tuhkumintuwanpaterawe nihka?

Nanan panka ya'wetupachinpura, ku nuwancharapiranwe uhshake ahtatuwachinen, wamirianen teh pawachina, aweatunen pa'panpa'pan itupachinen, iwapachinen, nara ku kiritka anuyahtapunarawe mahsapachina, inake tewetapachinen, nimara piyapi acha'ekasumare ku nihpun nahtantakamare pa'puyainensumare, ku tuhkumintuwanesumare inapuchin yunihpun a'na piyapi tuhkumintuwan nininsu ina kahtawainkensumare.

Nihpunawe kanpunta manutakasu tuhkumintu uhkuwikasu a'narumaruahchin.

Ina tinunsiataransu ina piyapi kahtawararinkensu ina tehkapun ina piyapi ya nunin nu'tehken, inamare ma'sha tuhkumintuteranta a'nukamasu ya'werin, a). Partitanen, b). Ninanua'wa ninen ya'weransuke, c). Ku nihpun karini de saru itupisu, ku nihpun karihka istutiransu ya'weterinkensu inawita ya'werenamen.

**Nihsha timanta itupisu,ihsupuchin:** Sa'anpure'kenpu nite'yatakamare, sanapiru'santa su'inare nite'yatakaisumare, kusharumare nihpun, ma'shasu nahtantamare nihpun, inake a'na piyapi nuya inaura nihkapun, ku nihpun Apukatunen kihkapun. Ina nihkasu, kemasu tuhkumintunen manutapun. Inake apukatunen tehkapun ihu tirihchu nishihtupisu artikuru 81°, Kutiku Purisisar Sipiri inakeinapuchin nanan nishipisu ya'werin tehkapun.

Tistiku ya nihpatan, ku nihpun ya sha'wipatan, a'nuke a'na tuhkumintu, inake tehke ku kahsu tuhkumintuwankuwe, ni'tun nuwanterawe kahtawainakusu. Nahpapunawe a'nahken tuhkuminturu'sa a'nuran ninanua'wawa'an keterinkensu, ku nihpun a'na wa'anu'sateranta keterinkensu, ihsupita: Ikirihsia keterinkensu pautihsaransu, partitanen, ku nihpun carini de saru inawita.

## ¿Ma tirihchuta tuhkumintu nahtantarinsu ya'weterin?

Ya'ipinpua Piruanunpua sanapiru'sa, kemapiru'sa tirihchu ya'weterin tuhkumintuwankaisu ya'werin, inachin kanpu piyapinpuwanta tirihchu ya'weterinpua.

Ni a'nukamare, sha'wikamare intuwaranta kemasu, inake tehkamake kanpu piyapinken ku nihpun pewenanken inamare ina. Unpacha'pin, ku inaputaunenpuawe nihka, kanpuasu kanpu piyapinpua a'nahkenpua ku tuhkumintu nitu ya'weterinpuawe ni'tun.

## ¿Ma sahkatuta nihkakaisu nihka tuhkumintuwanu'sa ya'weterin?

Nani piyapiru'sa nituhtapun ihstu:

Nia'nukapun, a'nupun  
wa'anu'sari nahtanpachin.

Kirihka amanutapun tuhku-  
mintunen a'narumaruahchin  
ya'wetainkesumare, inau-  
chachin wi'namamarenta,  
wa'wamamarenta inawanta  
ya'wetakamare kemapuchin.

Yunkikasu, yunihkasu, ketantaka-  
su wa'anu'sake nahtantakasu:  
Nimara Ninanua'wanenke, Muni-  
sihpiuke ku nihpun RINIKE. Na-  
nisu nitihkipachin tuhkumintunen  
taweri akutupisu manutakasu,  
a'na nahsha aya'werekasumare  
a'narumaruahchin



## 1.4 Aweatunaaya´mupisu, aya´panpisu, pe´sha, pe´sha itupisu



21

### ¿Ma´ta lesiones itupi?

A´na piyapi awepisu, inake nuwantasu aweatunape´sha, pe´sha itupisuaya´mupisu, aya´panpisu, pa´panpisu, ina naputupi.

lhseke a´nutarinen pu´piyan ku nihpun panka lesiones itupisu.

## A'nataweri ma'sha pahsarewasu:

A'na ninanua'wake nani pihta ta'wanterasu, Kuansha Piturure ninu'rapikeran nimahpisu nuwanta niaweatusa, inake Kuanshasu chini, chinihken ni'tun Piturusu minsepi, inake pe'sha, pe'sha iterin Kuanshari.

Ina niinautupachinara ninanua'wari anuyahtakamare yunkirin, ina ku nuyawe nipu'tupisu, inake yunihtakaimare inseranta ina kañaririn ina niawekaisu, nihpirinwe Piturusu na'kun ku nuyawe nitupi ni'tun ku inake anuyahtakasu yunkirin. Istatuke wa'anu'sake pakakasu yunkirin. Nihpirinwe ninanua'wasu ku nuwanterinwe inake Pituru pakakasu, inasu ninanua'wake anuyahtakasu nuya tuhpi.

Inake Pituru pa'nin tinunsiatapun, timantatapun, nihpirinwe wa'anu'sari itupi ku naniteraiwe ina nihka'waisu, inasu Ninanua'wake nani anuyahchihtunwe, kanpita unpu ya'weramasuna, unpu nanpiramasuna ni'sawatuma nani anuyahchihtumawe.

Nihpirinwe Pituru apukatunene tenin, ya'weterin tirichu ahtintineinensu, tenin nahtanawatun Piturusu tenin: Kahchachin nunsarawe inauterinaku aweatunaku, pe'sha, pe'sha iterinaku ni'tun, napurarawe. Nahpumantarawatun tirichu yaweterinku nuyasha'witainkenmasu ihsusu inauterinakusu, ihpu'pterinakusu ku wasu ihpera tinpu nanpiraisu, ku ihpera ya'weraichachinwe, irahka tinpu ni inauterai, ihpesu ku ni inauteraiwe ninanua'wake insesuna ya'weraike.

# ¿Aweatunen pe'sha, pe'sha, itupachinenen, aya'mupachinen, aya'panpachinen, pa'panpachinen insuta inamare tirihchuru'sa ya'weterinken?

Ihsunta nitutamasu:

## Nuya nanpikasu

Ya'yuwi kanpu  
piyapiru'santa  
ya'weterin  
tirihchunen nuya  
nanpikasu, nuya  
nanpikasu. Ina  
tehkapun tehsarin  
ku nanitupiwe  
wa'anu'sari  
pu'piyanteranta  
se'wakaisuwe, ku  
nihpun a'nawitari.

## Inakechachin nanan anuyahtakasu

Naniterin  
nuwantakasu  
inake nanan  
anuyahtakasu. Nuya  
ikin nahtanpirinwe,  
nihpunawe  
nihkapuna ku  
ahkete ku'chahchin  
nihkakasu ina  
awepisu ya'werin  
ina pe'sha pe'sha  
itupisu

## Tinunsiatamasu ya'werin

Istaturi a'paikasu,  
pa'puyakasu  
ya'werin kanpu  
piyapi. Nihpunawe  
a'nataweri  
ninanua'awa  
wa'ani, ku  
nihpun, Istatuke  
sahkaterinsuari  
a'wepachin,  
nu'wipachin,  
inake nanitere  
tinunsiakasu,  
timantakasu  
timantakasu  
Punisiake  
ku nihpun  
Wisekareke  
ya'werin.

- Wa'anusa Istatuke sahkatupisu, inapuchin kanpu piyapi nitupachina nihkakaisu, ahtintikaisu a'narumaruahchin Nuhtururi tantiakamare, inake nispitapun unpuwinta ina kanpu piyapi nanpirinsu, unpuwinta ina kanpu piyapi ya'werinsu, ku nanitapuwen uhseretakaisu ina.
- Inake Suntaru, Wiskaria, Wisi inawari nihkapuna nuya tantiyakaimare, inake nihkapuna unpurusuna inautupisu, inaran unpurusuna ya'kunin tantiyakaimare inauchin nitapuna kanpu piyapi ahkeran we'ninsu ninanua'wakeran.
- Inake kanpu piyapi nunsawachin nahtanakaisu Wa'anusari ya'werin, unpu kañaririnsuna ina inautupisu.
- Inake wa'an tinunsia ketapisu, sha'witupachina inake ina wa'an nihkakasu Nuhtururichachin ina kanpu piyapi nuya ahtintikaimare, nuya inapuchinsu nihkakasu nihpachin.
- Inake nanan anuyahtakasu ina wa'an nanan anuyahtuna'pi nininsu, nituhtakasu unpuinta ya'wepisu kanpu piyapi'sasu, unpuinkenta nanpipi inawasu ya'wepike.
- Inake wa'anusa nihkapuna tinunsiatuna'pi, inaran tinunsiarapisunta ina ninanua'wakeranahchin nihpachina, inauchin nihpachin inake nihkakaisu nanan anuyahtakasumare nininsu ihsupuchin: Unpuinta inawasu ya'wepi ninanua'wanennake, unpu nanpitupisuna, inaran ni'sapikieran, nihkapuna Ley Istatuken ya'werinsu, inake, nahpuinachin nanan nuya nihkakamare.



## ¿Insuwitata ina sahkatunihkapun aweatunen pe'sha, pe'sha, itupachinenen, aya'mupachinen, aya'panpachinen, pa'panpachinen?

Piyapiaweatuna inaputupachina tinunsiatarinsu nituhtakasu ihsupuchin  
nihkakasu ya'werin:

Istatu wa'anú'sari perahpachin paatun  
nanan anayahtakasu nihpachin,  
pakasu nani taweri perahpíke ya'werin.

Tantiyapíke kahtawatakasu ya'werin.

Nu'tehken sha'wikasu ya'werin.

Nunpinpachinsu inarichachin  
anuyahtakasu ya'werin.

Yunkikasu, nituhtakasu ina awerinsuari  
na'kun, na'kun ku nuyawe, wewewiru  
nitupachin, insuarisuna inauterin awea-  
tun ina tewenchachin pa'sarin tahshi-  
nan peike.



## ¿Unpu nineta kirihkape´sha, pe´sha, itupachinenen, aya´mupachinen, aya´panpachinen, pa´panpachinen?

Ihseke a´nuchinkein unpu nihkakamasunaina kirihka:

### A´na ahchi

Ina Kanpu  
piyapi,  
ninanua´wake  
ya´werinsu  
awepisu,  
tinunsiaterin,  
wa´anu´sake.



### Kahtu ahchi

Inake Wisekareri  
nuya nahtantapun  
inautupisu,  
nahpuruchachin,  
itapun nuhturu  
ina piyapi  
tantiyake  
inautupisu  
nituhkakamare.



### Kara ahchi

Ina Wisekareri  
ina piyapi  
awetuna´pi  
sha´wirapiapun,  
inapuchin nuya  
tuhpachin.



### Kara ahchi

Wiseri  
sintinsiapun ku  
anuyahtupachinarawe,  
inake sintinsiapisu  
nahtahtapun  
anuyahtakasu,  
inauchachin  
Wisikarenta.



### A´naterahpu ahchi

Ina imakaru  
nihpachin  
Wise, inake  
tinunsiatuna´pi,  
tinunsiapisunta  
itapuna imapui  
ina nanan.



### Sauhta ahchi

Inake Wiseri  
nihkapun inari  
anuyahtapun  
ku nihpun  
ninanua´wake  
ina nanan  
anuyahtapuna.

## 1.5 Sanapiru'sa, wa'waru'sa, sanapia'waru'sa ninanua'wake ku nuyawe ya'wepisu



27

### ¿Ma'ta ina violencia sanapi'samare, wa'waru'samare, sanapia'waru'samare naputupi?

Ku nuyawe nani taweri sanapiru'sa, wa'washaru'sa, sanapia'waru'sa ninanua'wake ya'wepisu. Nimara aweanarechachin ichin ya'werinsu su'ini, pa'pinkerana, a'shinkerana, ku nihpiun insuarisuna ichiya'werinsuari. Ihsupita ina nuya nituhtakasu ama a'natawerin ya'werewake tewekasumarewe:

Awana, ana'interinensu narake, sinturunke awerinensu, ihsuyatarawe yaita'parinensu, nuhkaninensu, yanpirinensu, tehpararanken iterinensu. Inapita ina(violencia Familiar itupi, peinenpuke nahpunin ichiya'werinensu, peinenke, ku nihpun a'na parihti pa'nanke nahpunin niterinensu, ku ya'wererankenachin inautupachinen inachin yunkiapunwe. Nahpuruchachin kankan yunkikamasu ya'werin.

Ihseke a'nutarainke inapuchin nhpisu, inauchin nanpiwisu:

### **A'nataweri inauchin nihpisu, ma'sha pahsarinsu:**

A'na kanpu ninanua'wake a'na piyapi, nani taweri sa'in awea-tun ya'werin, inautatun nani taweri awerahrin, inauterinke nuhka-nin, yanpirin, ku sa'inahchin inauterinwen, wi'ninpitarechachin, a'nara kemapia'wawa ina iskun pi'i ya'weterin, inaran a'na sanapia'wasu shunka a'na pi'i ya'weterin. Ina wa'waru'sa na'kun te'wapi pa'pin inaupachina. Ina pa'pini ku kenanseya-rinwe wi'ninpita aweapun, kuunta nu'pipirinwenta, ahketeterin nu'piwachinasu. Nahpatun ina sanapi a'na sanapi'sari inake ya'wepisuari penenpi unpukasuna ina su'ini inautahrinkeya. Nihpirinwe ina penenpirinawe sha'wirapikasu ninanua'wake, ku nihpun panka ninanu wa'anu'sake, Suntaruke, Wisikareke nihpun, nihpirinwe ku sha'wirapirinwe su'in te'watatun, nahpapunawe chinihken kankantawatun tinunsiakasu yunkirin.

Inapuchin sa'ini sha'wirapichinachin ni'pachina, sa'in iterin a'nataweri sha'wirapipatanku ahkete awana kepararan, na-putawatun tenin, kema teweran ni'tun inauteranken ku nuyawe ma'sha ninan, ku wa'waru'sa nuya ni'nanwen ni'tun inaute-ranke.

## ¿Insuwitata ina tirihchunenpita pa' puyarinkenmasu ihsupuchin nanpipatamara ya'werin?

Nishike, nishikasu:

Tirihchu ya'weterin:  
Wamirianenpitari  
ka'tanamare ina tinunsia  
pu'mukasu wa'anu'sake  
inamarechachin nihpisu,  
ku nihpun ninanua'wa  
wa'anu'sake, inawa  
ri sha'witakaimare  
nishikaimare.

Tirihchu ni  
tihwintikasu:  
Sanapiru'sa, kemapia'wa,  
sanapia'waru'sa  
ninanua'wake ya'wepisupita  
a'na nituhtuna'piri  
pa'puyakasu inake  
nituhterinsu a'nukaru  
ya'werin.

**Sanapiru'sa,  
sanapia'waru'sa  
kemapia'waru'sa  
nahpunin  
ya'wepachina  
tiri

### hchu ya'wetupisu**

Tirihchu wa'waru'sa  
ahtintikaisu:  
Wa'waru'sa nuntakaisu  
inawa intintipike,  
inawa nahtanpihsuke,  
nahpumantarawatun  
nuya nananke.

Ina wa'anu'sari  
ma'papun tinunsia, ku  
ahkete nihkapunaraawe  
unpuinsuna nani taweri  
ya'werinsu.

Tirihchu ya'weterin  
nikachinikasu:  
Nuwitupachin ina nahpunin,  
ku nihpun uhsha itupisu, inake  
sanapi'ru'sa, kemapia'waru'sa,  
sanapia'waru'sa, inake ina  
nihpuna tinunsia. Naniterin  
Wisekari inarakeran  
uhkuwikasu. Ama ahkete  
tiri

### hchunen ya'werinke tapitakaisumare.

Tirihchu sha'witakaisu:  
Wa'anu'sari sha'witakasu  
unpunta nihka ina  
nitinunsiawatera  
nahpuwinachin kankan  
yunkire.

¿Unpuaunta nihka, ina sanapi pa'pirinwe tinunsiatapun, nihpirinwe ku Kumihisariari nahtepachinwe? Tuhpinan itapuna ku ahkete ihsaruteranwe ina nihkatui nahteinkeinsu, nahpumantarawatun ku ahpira ahpira awerinenwe nihpera. Nihpunawe ina sanapi tehkapun, nahtekui Ley tenin ku inapuchin nihkawarewe tinunsiatakasu ya'werinwe. Inake ku nahtetupachinarawe ina sanapi sha'wikasu A'shimutenenkechachin ku nihpun Tiwinsuriake pakakasus.

## ¿Insupitata ina sahkatu nihkakasu inapuchin nanpispupita?

Inapuchin ya'wepispupita tinunsiatupachina ihsupuchin nihkapuna:



Istatu wa'anu'sari perahpachin pakasu  
nani taweri ya'werin.

Tantiyapike kahtawatakasu ya'werin.

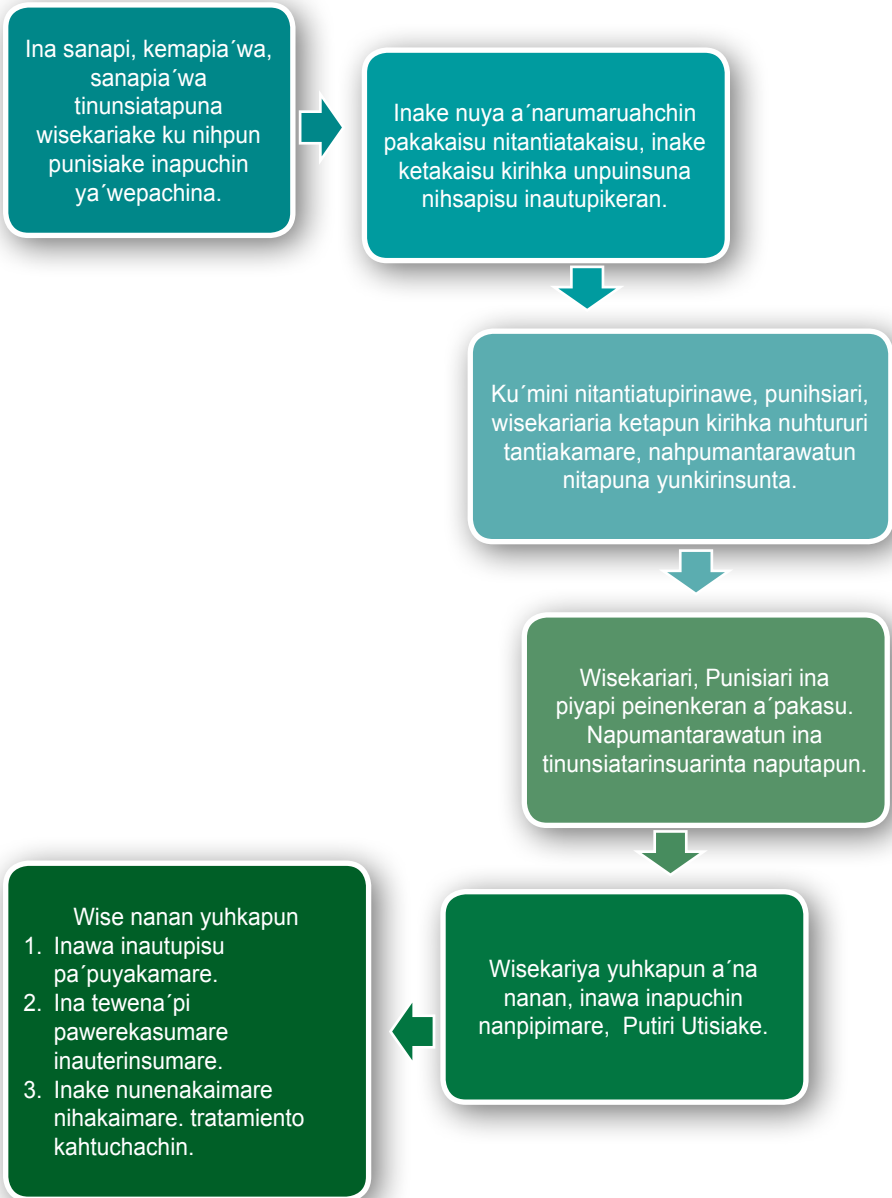
Nu'tehken sha'wikasu ya'werin, ku  
nunpinapunwe.

Nunpinpachinsu inarichachin  
anuyahtakasus ya'werin.

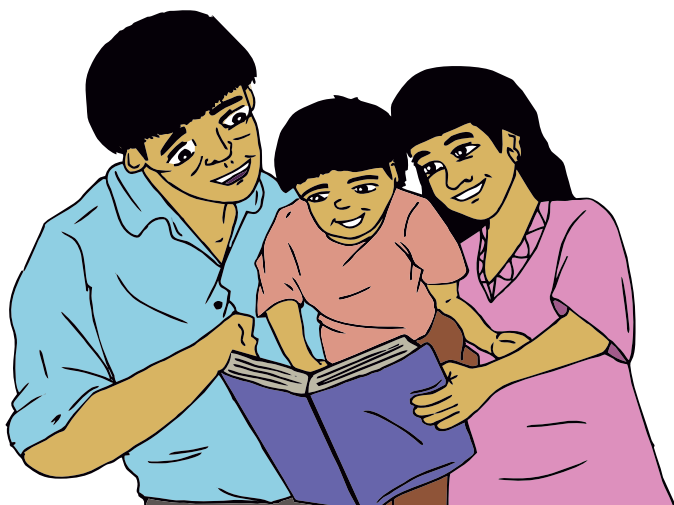
Yunkikasu, nituhtakasus ina piyapi  
inapuchin nininsu pa'chihnachin  
tahshinan peike.

## ¿Insuta nihka, unpuinta nine tinunsiatakamare?

Ihseke a´nuchinkein unpu nihkamasuna ina finunsia:



## 1.6 Uhshake ata'tupisu, ku nuwantapirinwe ku naniyahtarapirinwe pihihpinen



32

**¿Ma'ta ina violación sexual? wa'washamare, sanapia'waru'samare, nanua'waru'samare, ku nuwantapirinwe ku naniyahtarapirinwe pihihpinen?**

A'na mahshu sanapia'wa, nanua'wa, ku nihpun a'na paya munshiterinsu, ku nuwantapirinwe, ku nihpun anuwantapatun inuterinsu ina itupi violación sexual

Shunka kahtawini pi'i pihkeran violación itere, ku nuwantapirinwe ina nanua'wa, wi'napia'wa uhshake atahtupachinara.

Nahpumanrarawatun ihsupuchin tewetupisu a'na kemapia'wa, a'na sanapia wa, a'na nanua'wa, tuhpinan se'watupisu tahparunena.



Ihseke a'nutarainke inapuchin nihpisu:

### **A'nataweri ma'sha nihpisu, inapuchin pahsarinsu:**

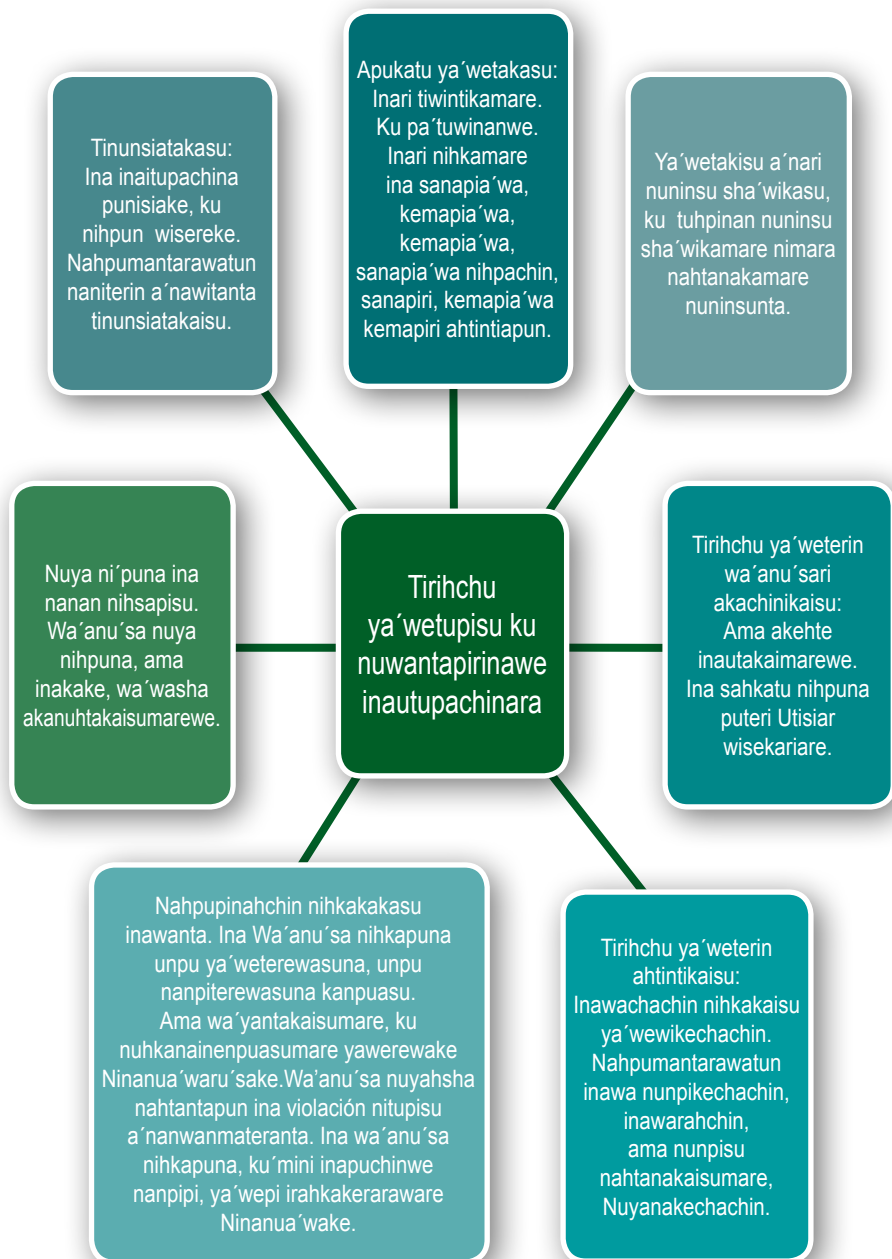
A'na sanapia'wa shunka kahtu pi'i ya'weterinsu ninanua'wake a'nanaya ku yunkiasu ana piyapiri ina ninanua'wakeranchachin irake manin, munshitakamare, inake iterin pa'a inawa'a, itasu sanapia'wasu ta'amara.

Inari inauterinsu ahpimiahchini, a'shin yu'in, ina sanapia'wa nuyah nuwiterin mahshuri, wa'waterinkeraware, nuhya ya'wepirinawe uhshine.

Ina nanuna'wasu pa'pin, a'shin sha'witerin. Nahpuwachina inawasu nihkeramapi. Inasu naputupachinara ina nuwanterin ni'tun inauterawe, ku ihperahchin inauterawe nani sa'awepuchin nitahrawe.

Ina nanua'wa pa'pinpitari tinunsiakasu nihpirinwe ana'intakaimare, nahpapunawe inasu tenin ama nihkusu ina, taweri piritiahpuma inamare, nimara ya'werewakesu, nanpi-rewakesu inapuchin nanua'waru'sa uhsha nuyah nituhtunpi tenin.

## ¿Insuwitata ina tirihchunenpa 'puyarinkensu ku nuwantapirawen inauterinensumare?



## ¿Insuwitata ina sahkatu nihpuna tinunsiatupike ku nuwantapirawen inautupachina?

Ina tinunsia nihsapatan ku nuwantapirawen inautupachinen ina nituhtakamasu ya'werin:

Istatu Wa'anú'sa iterinkensu  
imahke, unpuinsuna pa'puyamasu  
kemapia'wa, sanapia'wa inaran  
nani su'sua'warusanta.

Ku na'wekasuwe ahkete ina  
sahkatu nihsapisu inauhin nitupisu  
pa'puyakamare nuya imahkamare.

Nu'tehken sha'wikasu ya'werin  
unpunta kanpuasu ya'weterewa  
ninanua'wake, unpu pi'ihkeranta  
uhsha nuwitupi.

Nu'tehken sha'wikasu ya'werin  
unpunta kanpuasu ya'weterewa  
ninanua'wake, unpu pi'ihkeranta  
uhsha nuwitupi.



## ¿Insuta ina karihka anuyahtapun tinunsiatupatan ku nuwantapirawen inautupachinen?

Ihseke a' nutarainke inapuchin nihkakamasu:

Nihsha piyapinta nuya tinunsiatapun ina pahsarinsumare wisekariake ku nihpun punisiake, inake sha'wipun ¿Unpuruta? ¿Unpuinta? ¿Awerin? ¿Tehpapunken iterin? Inapita sha'wipuna.



Ina kemapia'wa, sanapia'wa, su'sua'wa, Nuhtururi nihkapun, nuhshitapun, inaran sihkurukurinta.



Wisekareri itapun Wise, ina piyapi mahkakaimare, ama ta'akamarewe.



Inake sha'wikaisu ya'werin wa'a nu'sarin nahtanaimare.



Wisekare, punisiare papuna nihkakaimare insehketa ina inauchin pahsarín.



Wisekareri tinunsiapun ina piyapi Putire utihsiake, inake kañarítakamare ina nanan ya'werinsu.

## 1.7 Tehpaterinsu



### ¿Ma'ta ina homicidio itupi?

A'na piyapi, a'nari tehparinsu, ku yunkiahsuwe, naniterin tehpakasu piyapi.

37

### A'nataweri inapuchin pahsarinsu:

Shipahku kanpu piyapi ya'wewan, irahkakeraware ltekari ku nuyawe aku-rin nu'pamare. Inari a'na piyapi'sa ayunkirin nu'panen uhseretakaimare nahpumantarawatun wi'ninpita nu'witerin, ku nuyawe pu'terin, ku nunte-rinwe, inapihkeran nunapirin tañu nihkaimare, tehpakaimare.

Nahpatun Shipahkuri itapun: lteka pihpikike ihsekeran, ku pihpiwataun te-hpararanken iterin. Nihpirinwe ltekasu ku pihpikasu yunkirin ya'weterin tirihchu ya'wekasu Ninanua'wake ni'tun, nihpirinwe a'nataweri inari te-hpapachin wamirianenpita parihsitapun. Ina ni naputupisu Ninanua'wake nuyah nituhtupi.

Kahtu taweri na'kurinke ltekasu chimipi kenanapi. Nahpatun sa'in, iinpita-su tuhpi: Kun inkariteranta pa'puyapiwe tehpati kiyasu iyawei, inake tuhpi ku inkari tehparinwe Shipakuri tehparin tuhpi.

## ¿Insuwitata ina tirihchu ya'weterinpu kirihka nihkamare nihka teh pawisumare?

### Tirihchu ya'weterin nanpikasu:

Tirihchu Istatumare, Ninanua'wamarenta teh patakasu nahpa ku nuyawe. Nahpatun teh patuwatera ana'interinenpu.

Istatumare piyapi teh paterinsu tahshinanpeiterin na'kun pi'imare, ina piyapi teh papisu inari ku tananpiterinwe ni'tun nuyaran nanpikasu ina piyapi. Nahpumantarawatun ku nuya ya'weterewe, ama ina ahkete teh patakaisumarewe inapuchin Istatu ninin. Nahpumantarawatun Istatu yunkirin nanpiresu na'kun pa'terin, nahpatun ana'itakasu yunkirin inapuchin nihpisupita.

¿Insuwitata  
ina tirihchu  
ya'weterinpu kirihka  
nihkamare nihka  
teh pawisumare?

### Nanpiwisuchachin ni'sawatuna anuyahtakaisu:

Inapuchin ya'werinmare nanan wa'an iratakasu Wisikariyake tinunsiatamare, inamare niwentunapuna kirihkaturu'sa, inkarina ni'nin inawa sha'wikasupuchin nihkaimare. Inake Wiskare apa'tapun ina kirihka ni'sawatun unpuinsuna kanpu piyapi'sasu ya'wepi, unpuinsuna nappipi (Inawara, inakechachin nanan anuyahtaupisu) inake ina Wa'an nunapun nu'tehen.

## ¿Insuwitata ina sahkatu nihpuna wamirianenpita ina teh pawimare?

Ina piyapi tinunsiatarinsu ihsupuchin nihkaku sahkatu ina teh pawisumare:

Kahtawakasu ina nihpike  
sahkatu nahtantupike  
wa'anusa, nituhtakaimare  
unpu tehparinsuna.

Ni tuhtakasu ina chimipi  
yanua'awa, yahcha'awa  
tehsapachina inake  
nihkamare, nituhtakamare.  
Inake yunkikamare nuya  
inautakaisu, ku nuyawe  
nihpun, inamare nuntapun  
wa'anusa Istatuke  
sahkatupisu.

Inake nuya sha'witakasu,  
wa'anusa, nuya  
yuhkaku nanan, unpu  
ya'weterewasuna, unpu  
nanpiterewasuna kanpuwasu  
ya'werewake, inachin  
nitehpanntuatewara nisha,  
nihsha ninanua'ru'sake.



## ¿Insuta ina karihka ninesu anuyahtakamare ina piyapi teh pawimare?

Ihseke a' nutarainke inapuchin nihkamasu:

Tinunsiateke wisekariake ku nihpun punisiake. Ni'ke modelo 5.



Inake nuhtururi nihkamasu, inake mini chimipi, yanukaisu, ku nihpun yachapuna. Nihkamasu a'na pagina'pa pagina'pa.



Wisekareritinunsiapun Putire Utisiake ina tehpatuna'pi, ya'wetupachin na'kun sha'wirapi'su.



Inake wisekaria nahtantapun ina tehpatersinsu. 'nahpuru ninanua'wa wa'an tehkapun kanta kahtawainken wisekare.



Inake wisekarerianayatupachin ina ninanua'wake ya'werinsu ina tehpatupachin, wisekare tehkapun ma'mareta ina piyapi usekapun.



Inake wa'an puteri utisiare nuya yunkirawatun usekapuna ina tehpatuna'pi.



## 1.8 Chimipi yanupisu, yahchapisu



### ¿Ma'ta ina necropsia itupi?

Chimipi Nutururi ni'ninsu, inake tantiarin. Inake nanitupi yanukaisu, yahchakaisu, tantiakaimare, nihkakaimare, unpu chiminterinsuna, makarisuna tehparin, inkarita nihka tehparin.

Ihseke a'nutarainke inapuchin nihkamasu.

### A'nataweri inapuchin pahsarinsu:

A'na Ninanua'wake kenanpi Wirian tehpa-pisu iyunsanke. Inake nitupi nuhtuwaru ihsaruterinsu, inautawatuna kuhsera'watupi. Ina Ninanua'wake yunkipi ina unpu chiminterinsuna, inkarisuna tehparin.

Ina wamirianenpita tuhpi: Nuhsa irahka sa'ini inari atehpatu-hchinachin, ina sanapi a'nariteranta ayunkirin inapuchin nihkakasu. Nahpatun ina wamirianenpita yunkipi tinunsiakaisu Wisekariake, nahtantakaimare, nituhtakaimare insuarisuna tehparin ina piyapi Istaturi ana'intakamare.

Inake Wa'anua'sari wamirianenpita iterin: Ina chimipi yanupuna, yahchapuna nahpatun yunkipi tinunsiatapuna ku nihpun tinunsiatapunawe.

## ¿Insupitata tirihchu ya'werin ina wamiriaru'sa ku nihpun Ninanua'wa ina chimipi yahchakaimare, yanukaimare?



## ¿Unpureta chimipi yanupui, yahchapui tehsawachinara?

Insuna nuwanterinsu nunkakasu ina chimipi yahchaáwa, yanua'awa  
tehsapachinara inamare nituhtakasu: Unpuruta, unpu nihkapunta.

Yunkire tinunsiatakasu  
tehpaterinmare, inara kañaritere  
nahtantakasu, unpu nininta, inta  
ina tehpatura'pi.



Wisekaresu tenin nani  
kañaritarewa ni'tun ihisu chimipi  
YANUTEWA nia'awa.



Chimipi wamirianenpita ku nihpun  
ninua'wa wa'an chinihken  
nanan yunkapun inapuchin  
yunkipachin wiseresu, ku kiyasu  
chimipi YANUTUI ya'werauwe,  
Ninua'wanuike.



Inake wisekareri itapun  
wamirianenpita, Wa'an ina sahatu  
imahkasu ahketeware pankatarin  
ku YANUPATEWAWA, KU  
YAHCHAPTEWAWA ina chimipi.



Wisekare yunihpun a'na  
piyapi Antropologo itupisu ina  
sha'wikasumare unpuinta kanpu  
piyapi'sasu ya'wepi, unpuinta  
inawasus nanpipi ya'wepike.



Inake Wisekare tehpapun ku  
inautupirinawenta nuya imakasu  
tinunsiakasu tehpatura'pi.

## 1.9 Munshiwānpisu



### ¿Ma'ta ina adulterio itupi?

45

Munshiwānpisu kemapi ru'sa, sa'in ya'wetapunarawe, ku nihpun sanapiru'santa su'ina ya'wetapunaraiwe inapuchin nihpisu, ina itere adulterio.

Ihseke a'nutarainke ina nihpisu:

### A'nataweri inapuchin pahsarinsu:

Nuwise Nuhsare niinautupisu a'na Ninanua'wake ya'wepi. Kara pi'i na'werin nisaáhtupisu, inara ni mahpikera kahtu wa'washa ya'wetupi. Nihpirinwe, Nuwihsesu sa'in tewananpitahrin a'na sanpire ina ninen Maria.

## ¿Insupitata tirihchu ya'werin ina karihka nimanesu sa'anpure'kenpu tapikamare?



Nuyah yunkirawate, nuyah ni'sawate:

Ama tewetekesuwe munshiwapisu a'na sa'antarinsu ku karihka tapipunawe, inaukasusu panka na'in. Ina nuyah nimahpirinawe, a'na ina aipi sa'antarinsu ikirihsiakechachin, munisihpiukechachin.

Inasu kahtu partitapuchin nihsha, nihsha ya'weterinpuchin.

## ¿Insupitata nihkapun insusuna ina kiritaka tapikasu yunkipachin, tewanapiterin ni'tun?

Intana nuwanterin tapikasu ina nimahpisu nituhtapun, nuwitapun ihsupita:

Ina kiritaka ku tapiyahtasewe, nituhtakasu,  
anuyahtakasu wi'nanpuwitamare,  
wa'wanpuwitamare, ¿Inta paweretapun  
inawa nuya ya'wekaisumare?, ¿Ineta  
ya'weapunasu?

Nuya yunkirawate, un'tehken nunkakasu  
ya'werin

Nuya yunkirawate sha'witakasu Wise,  
unpuinta Ninanua'wakesu ya'werewasu  
sa'anpure'kenpu, sanapire'kenpu,  
nitewananpituwatera unpuresuta. Inake Wise  
nihkapun nahpuinachin un'tehken nihkakasu  
nunsaresu nite'yatakamare.



47

## ¿Ma'ta nine nihka nimanesu tapikamare?

1

Kemapi ku nihpun  
sanapi timantatapun  
putire utisiake

inari nite'yatarama  
itakamare.

2

Insusuna timantarapisu  
inanta a'panitapun,  
inake

Wiseri perahpun,  
inakeanuyahtakamareku  
nihpun tapichinakamare

3

Inake tewenchachin  
nihpachinsu, Wiseri  
nishipun inaurapisu, inake  
tehkapun

ihperasu nani  
nite'yaterama.

## 1.10 Nara na 'kun uhkuwipisu

¿Ma'ta ina tala ilegal itupi?



lhesupuchin nihpisu, a'na, ku nihpun na'ayapi nara a'neatuna mahpisu ku inkariteranta ketupirinwe, ku nihpun mahke itupi pihkeran, Ina mahkaimare nara rintiru na'wetawatun na'kunkeware a'nawitanken nihpirinwe a'neatuna na'kun nara ku inahkeware mahke itupirinawe mahpi.

lhseke a'nutarainke inapuchin nihpisu:



## A' nataweri inapuchin pahsarinsu:

Ana Ninanua'wa Kuru itupike, piyapi'sa ya'ipi Ninanua'wachachin niwentunawatuna inake yunkikaimare unpu anuyahtakaisuna panka nanan ya'wetupisu nu'panena. Shunka kahtu piyapi'sa a'naparihtikeran we'sawatuna inawa nu'panenake ya'weituna nara mahkaimare. Inaupachina Wa'ani Ninanua'wake ya werinsuri ya'winkaku ku Ninanua'wa nahtanamawe itupirinwe, inawasuhpu: Wa'anusa nara ni'napiru'sa keterinkui ya'kunatui sahkata'uimare, nahpumantarawatun ihsumu'pa' ya'yuwimare tuhpi.

Napupachinara wa'anusasu nuya nahtantupirinawe inaketupisu kirihka Wa'anusa nara ni'napiru'sari sahkatakaisu, ku un'panenakenmare ketupi, nahpumantarawatun, nani kirihka ketupisu nani taweri ketupisu ta'wanterin.

## ¿Insupitata ina tiriychu ina naramare ya'werin?

### Tiriychu nu'panena a'paikaisu:

Nituhtakasu istaturinta ketupirinwe sahkatakaisu, nanitupi ninanua'a nahtanakaisu ya'werin, inawa nuwantupachina nahpuruware nanitapuna sahkatakaisu, inawa nu'panenake nihpachin.

### Tiriychu nara uhkuwirapimare

### Tiriychu nara uhkuwikaimare:

Ihsu sahkatu nara uhkuwikaisu ya'werin kirihkake nishipisu, Ley ya'werin inarin kahtawarinsu, nihpunawe, ina uhkuwipisu nihpun Piruanuru'sanken, inawamare nihpun, nihpunawe ama ku'chahchin ihsuru'te tapiapunawe, ku tapikaisu ya'werin.

## ¿Insupitata ina sahkatu nihkakasu tinunsiatereke nara uhkuwirapachinara ku kirihkawan nihpachina?

Intana tinunsiatakasu nu'panenmare ku nihpun ni ya'karirinsuare nu'panen ihu nituhtakasu:



Kahtawatakasu, sha'wikasu ya'yupi  
ni'ninsu ina nihsapisu inake.

Ahkete nahtanterarapun nanisu  
tinunsiapachina.

Perahkasu Wa'an'u'sa ina nara  
uhkuwiatuna nahpunin nitapisu piyapi'sa.

## ¿Unpukasuta kanpu Ninanua'wake inapuchin nara uhkuwirapachina ku kirihka ya'wetupirinawe?

51

Pakakasu nihkamare, nuntakamare  
wa'ani ina uwihsina pa'puyarinsu  
piyapi'sa Ninanua'waru'sa, inaran  
Ministeriu ustisia'pa, inake yunkikaimare  
unpukaisuna.



Inaketimnatakasu kahtawakaimare  
Ninanua'wa nimara Ley ya'werin  
ninanua'waru'samare ni'tun.



Ku'su nahtetupachinawe, sha'wikasu  
Tihwinsuria, inaran sha'wikasu  
Ministeriustisia'pa.



Sha'wikakamare ina wa'an'u'sa  
nara pa'puyana'piru'sa pakatuna  
inawachachin nihkakaimare.



Inake nahtantakasu tapikaimare ina  
kirihka ku nuyawe nihpisu ketakaimare,  
inaputatuna tehpatunapuchin nitapi  
kanpu Ninanua'wa.



Inake timnatakasu inake  
nihkakaimare ina kirihka na'kun  
nihpisu ku sha'wiaunarawe,  
tewepi na'kunNinanua'wa tiriuchu  
ya'wetupirinwe, kahtawakaisu nihpirinwe.

## 1.11 Sha' witerinpusu ya'ipi

### ¿UNPU TINUNSIATAKASUTA NIHKA A'NA KANPU PIYAPI KU NUYAWE NITAPACHINA?

Timantatamare a'na Wiseke ku Istatukenwe nininsu, inakesu nuwantere Apukatu, ina a'chintainpusumare unpukasumarena. Ina Kanpu piyapi naniterin pakakasu insutana Tiwihtirinpusu a'ninkechachin, ina paapakasu ya'werin.

Tinunsiakasu punihsiake ina kanpu piyapi naniterin nihkakasu inaurachachin, nahpapunawe, Apukaturi kahtawarawachinsu ina nuya, nuya.

Inake nuwantuchinapun Tuhkumintunen, ku ya'wetupachinwe, nihkakasu ya'nan nuninsu ihisu kirihkake ina nanan.

52

### ¿INSEHKETA KENANAPU KIRIHKARU'SA INA TINUNSIATA'U MARE?

Ya'nan kirihkaru'sa ya'weterinkensu inawita nuwantapun (Kunteratu, karehta, tinunsiaru'sa inawita), nahpatun nuyahsha akuke, nuyahsha tahpake, unpurukerawareta nininsu nuyahsha akura'piake. Inawita nuyahsha tahpake. Nahpumanatarawatun uhkuwike na'kun kuhpia.

Ku ya'weterinkesupitahsu paatun nahtanke ina Istatu uwihsinake, inake a'nataweri pawerekeran uhkuwipun pankukeran, kuhpia risurusuon nu'tehen nininsupita Putire Uhtisiakeran, nacimintunen, ku nihpun nisa'ahtupisu RINIKE kenanapun inapita.

Nahpumanatarawatun a'nahken kirihkaru'sa a'nawitake ya'werin. Inapuchinta ya'wechinku tuhpatan Apukaturi inasu nahtanpun Wise, tuhpinamare ku ketarinkenwe. Nanisu ya'wetupachinken inake ni'ke ma taweriketa pihpirin ina kirihka, ma'ta tenin inake nuninsu.

## ¿UNPURUTA TIMANTATERE LEY TENINCHACHIN?

Timantatamare Ley teninchachin nuwantere Apukatu. Inake kanpu piyapi Apukaturi kahtawakamare. Inake naniterin pa'puyakamare Ninanua'wa nu'panen, nuya nu'pa ya'weterinsu ihisu ru'te.

Ina pa'puyakamare nuya ya'wekamare, ya'werin nihkakasu Ley teninchachin a'na pa'puyainpusu inachi itupi: Hábeas Corpus. Inake ku nuwanterewe Apukatu, ina kenamariwa a'na kirihka wentunu'sake.

## ¿UNPU NITIWINTIAPUNTA INA KANPU PIYAPI TINUNSIAWACHINA?

Timantawachinen yunihkamasu Apukatu nuya nitihwih intikamare.

Nuya ina timantawisu Kanpu piyapi wamirianeni, ku nihpun Ninanua'wari kahtawakasu, a'narumarachin Apukatunen yunihkamare, ku nihpun Ninanua'wa Wa'anua'sarinta kahtawapun ya'werin.

Inake, ku Ninanua'wari kahtawapachinwe, ku wamirianenpitariteranta, ku inmare ta'tahpunwe imakasu ina tinunsiasu.

## ¿INKARITA KAHTAWAPUN NINANUA'WASU, KANPU PIYAPINTA?

Tihwinsa Puperikari: Inari kahtawapun ihisuwitage: Sipiri, sahtatumare, ana'inke nininsu inaran wamiriamarenta ina sahtatu nihpun tuhpina ku pawerewawen. Punihsiakeran, Wiseskariakeran, ku nihpun Puteri Utisiakeran antawachinen yunihkamasu Apukatu nuya nitihwintikamare.

Ina Tihwinsa Puperikake ya'werin apukaturu'sa inake kahtawapisu kanpu piyapi'sa, ya'wetupi sahtatu ahtintikaisu inaurinke.

A'na Apukatu pawerekeran ina sahtatu nininsu yunihkaisu inake sahkatakamare, inake ku sahkatahsuwe, yunkichinapuna unpusu pawere ma'patakasu, inake kahtawapun Ninanua'wa, Witirahsiun, inamare pawerekasu yuhki ta'wanterinke, ku nihpun yunkiapuna unpakasuna.



# KAPITURU KAHTU

ISTATU PIRUANU  
NINANUA 'WARU 'SARE

Alhsu kapituruke kananapun nanan, ina kahtawaunken intintikamasu, ma'ta ina Istatu Piruanu, nahpumantarawatun, unpuinta Ninanua'waru'sa pu'terin, nanan ya'wetupachinara, ina ihu un'tehken a'nutarinken, a'chintarinken karihka.

Ihsu kapituruke kañaririn Wa'anua'sa sha'wirapirin unpu sahkatkaisuna nanan anuhtakaimare ihu Piruke, inake Ninanua'wa Wa'anua'santa marawirin, unpuinsutana Kuntitusiun Puritihka Pirunke artihkuru<sup>149</sup>tenin. Inaran sha'wirin insuwitata ina wa'anua'sa tewenchachin nu'tehken ustisia nihpisu Istatu kahtawapisupita inake.

Ahkecha ayunkiripu unpuinta pu'terin Istatu Piruanu piyapi'sa, inaran na'kun na'kun kanpu piyapi'sa Ninanua'wake ya'wepisupita.





## 2.1 Ustisia Piruke



### ¿Inpitata nihka Piruke ana'intapun?

57

Piruke ku Puteri Utisarisahchin ya'weterinwe ana'intaisu. Kuntitusiunke, inaran a'na ley, inaran Puteri Utisiachachin tenin uhkuwipi karihka inake tenin: A'nawita uwisinaru'santa nanitupi ana'intakaisu, ni'sawatuna unpuinsuna ina nanan, inake nihkapuna nanitapuna ku nanitapuna nihpun.

Nahpatun Piruke nanitupi ana'intakaisu:

**Puteri Utisia:** Inasu Istatu Piruanunke, ina sahkatunen ana'intakasu. Inaran ya'wantarín kahtu: **Karihka nina'pi, karihka yu'na'pi,** inaran **Puteri Ikutipu** inasu, nina'pi, a'paina'pi, a'pituna'pi ninin. Nituhtakasu ihswitasu inawara sahkatupi, karachachin nahpuwinahchin.

Ihsu Puteri Utisiake ya'werin nisha, nihsha ana'inu'sa, inaran Tiripunari itupisu inake anuyahtupisu nihsha, nihsha nanan (Tahshinanpeimare,

Piyapiru'samare, wamiriamare, na'kun ya'werinsupita), nahpumantarawatun ya'werin Nuyahsha ana'interinsu.

**Kanpu ninanua'waru'sa:** Artihkuruke 149° Kuntitusiun Pirunke tenin: Akachinirin nu'panenkechachin, nanpiransuchachin, ya'weransuchachin, nanan anuyahtatun ku nihpun ana'intakasu nihpachin ana'intakasu ya'werin, tenin nunkapun.

### Artihkuru 149°:

**Sahkatakaisu ihtua, ihtuaru'te, Kanpu Ninanua'waru'sake, Kanpisinuru'sake**

Wa'an Kanpisina'sa, inaran Wa'an Kanpu Ninanua'waru'sakenta ihtua, ihtuaru'te ya'wetupisu, nuya nanitupi sahkatakaisu, nanan anuyahtakaisu, ana'intakaisu, ina ya'wepikechachin, napurin a'na Tirihchuke kanpuamare ya'werinsu (**Derecho Consuetudinario** itupisu), nahpapunawe a'paikasu ama tewetakaimare **a'na tirihchu nuhya piyapi ya'weterinsu (Derechos fundamentales de la persona)**. Ley tenin: Ina Wa'anu'sa sahkatakaisu nuya ninuntatuna a'nawita Wa'anu'sare: Usekatuti Pasere, inaran a'nawitanta ya'werinsu Puteri Utisiake.

**Kanpisina ninanua'waru'sake:** Artihkuru 149° Kuntitusiunke tenin: Akachinirin, ketarin chinirupi ana'intakaimare panka nanan ya'wepachin, tirihchunena ni'sawatuna, ya'wepikechachin.

**Runta kanpisina'sa:** Ihtua' ihtua' ru'te **Puteri Utisiari** ni'sapisu, inapitari kirihkake nihsawatuna ketupi, **runta kanpisina'sa**.

Chinirupi ana' intakaisu nanan ya'wepachin, tirihchunena ni'sawatuna, ya'wepikechachin, nahpapunawe nihkakasu ama na'wehtakaisumare **a'na tirihchu nuhya piyapi ya'weterinsu (Derechos fundamentales de la persona itupisu)**, inake nuninsu. Ya'wepichi runta kanpisina'sa, nuyah ninirapiwisu unpu sahkatkaisumare, inauchachin kanpu Ninanua'waru'santa. Nihpirinwe ahnahkensu inawaraihchin sahkatkaisu yunkipi ya'wepike (**Autonomia itupisu**).

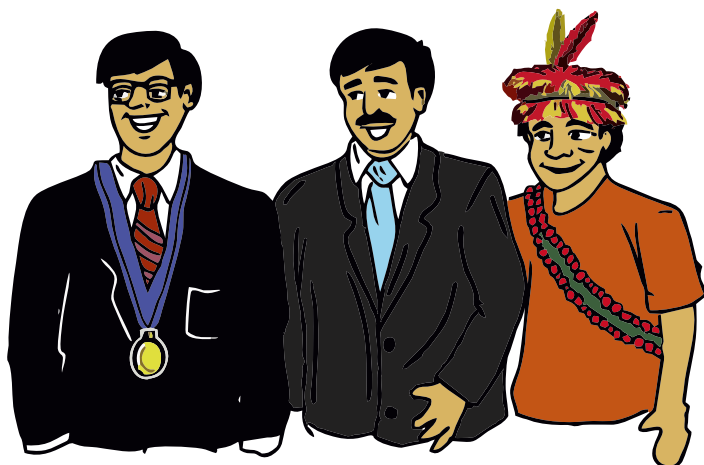
**Teripunar Kuntintusiunar itupisu:** Inachin Istatunken Puteri Utisiare sahkaterinsu, sahkaterin ana'inke, nanan ya'wepachina ana'intakamare, kahtawatakamare a'na nahtantupachin kahtawakaisu, nahpumantarawatun ley tapikamarenta, ku nuyawe nihpachin, chiunihken nihpachin, ku nuyawe piyapi'sa nitakasu nihpachin.

**Suhwerakaisu ni'ninsu:** Inanta Istatunkenchachin, inanta ni'nin, ku nuyawe inake nihpachina anuyahterin.

**Suntaru'sa Teripunanen:** Inawasu anuyahtupi ku nuyawe suntaru'sa nihpachinara, ta'apachinara sirpitapikieran, ta'ananpipachinara, wa'anu'sa wa'yantupachinara, narintupachinara, wanitupachinara inake, inawita ana'interin ku nihpun teyaterin, uhkuwimiatupi.

**Arpitu' sa:** Inawasu ku akehte nanan nuyatupiwe, pu'piyan nanan anuyahtupi, nitewetupachinara kurihkiran, inmarera.

## ¿Inpitata ina Ustisia Piruke nihpi?



60

### ¿Inpitata ina Ustisia Pirukenihpi?

Sistema Utisia Istatunken nininsu, ku uwisinaru'sake ya'wepisu nanan anuyahtupirahchinwe, ana'intupirahchinwe inake nihpi: Puteri

Utisia, Teripunar Kuntintusiunar, Suhwerakaisu ni'ninsu inaran Suntaru'sa Teripunanen, na'a ya'wepi, sahkatu nihpisu a'nahken nahtantapisu ma'sha, tinunsiatapisu ku nihpun tihwihintirinsu, tashinan peike yunkiatapisu.

Ihsupitanta ya'werin:

- Punisia Nasionar pirunken.
- Ministeriu Ya'ipimare ku nihpun Wisekaria.
- Tihwihinsa Ya'ipimare ina Ministeriu Utisiakeran, inran
- Tiriychu ni'ninsu Piyapiru'samare.

## Utisia kahtupuchin ya'werinsu

### Utisia kanpunken- chachin nininsu

Ya'ipi Utisiake sahtapisiuwita nihkakaisu nuhya sahtatu, kunperi'ina ina kirihkake ya'werinsu, nishihtupisu, nahpapunawe nuyah ni'sawatuna ninanua'waru'sa ya'wepisuchachin, nanpiwisuchachin nihpuna, ina tehkapun insetana inawa kanpu piyapi'sa ya'wepi.

Inapuchin sahtatate Ley nuninsuchachin kunperikasu nu'tehken, ina ni'newa ihseware. Nahpatun kanpupiyawipuwa, yunkikasu, nitutakasu, inaran itakasu wa'an'u'sa kunperikaisu ya'werin; nuya a'pairawatuna tirihchu yawerinsu nuya nuya puchin nininsu kanpu piyapiru'samare, nimarawatun ni'puna unpuinta inawasu ya'wepi, unpuinta inawasu nanpipi ya'wepike.

Ina nanan teninsu Intercultural, inari Istatu Wa'an'u'sa kamairin Kanpu piyapi'sa nispitakaimare nanpipihsu, ya'wepisu. Inawara nuya ya'wekaisu, kurihki yunihkaimare inaran sahtapikeranta nuya nuya nihkatuna ya'wekaisu ya'wepike, inachi (Derecho Consuetudinario).

## 2.2 Istatu piruanuninanua'waru'sare



62

Kañaritariwa, ihseke **KUNTINTUSIUN**, yunkirawatewa, ina Ley tekenenchachin ninin Istatu Piruanu, inari nuyah nuwiterin tiriychu kanpu piyapi'sa ya'weterinsu.

**Ina KUNTINTUSIUN** tenin, artikuru 51°, ina pe'nacha ahketeware Ley ya'werin, inawanta nuyah nuwiterin ina tiriychu kanpu piyapi'sa Ninanua'waru'santa ya'weterinsu.

Kuntintunsiunkechi nunin ihsupuchin, Istatusu **partisihpakasu, ni'nin ya'yuhpiachachin nuya ya'wekaisu, ku a'naihchin marewe.**

## Ihsupuchin Istatu Piruanusu

Partisihpakasu

Ni' nin  
ya' yuhpiachachin  
nuya ya' wekaisu

ku  
a' naihchinmarewe.

Ku nuwanterinwe  
inkariterantaapihkasu  
ma' sha nininke.

A partisiparinpu karihka nihpachina, ma  
Ufichinasu akukasu yunkipacchina, inake ya'ipi  
piyapi' sa partisihpapi, kanpupiyapi' ru' santa.

Ku nuwanterinwe inkariteranta apirinwe  
ma' sha nininke.

Ku naniterewe a' na  
inapuchinpuhin Kupirinu  
ya' wekasu.

ku A' naihchinmarewe sah katerin, nuwanterin  
ya' yuhpia piyapi' sa kahpah kankantakaisu,  
ya' yuhpia ketakasu ma' sha ya' werin.



## Ma'marechachinta Istatu Piruanu sahkatarin

Ma'marechachinta Istatu Piruanu sahkatarin: **Piyapi, nitihwihtikamare, inaran nispitakaimare nanpirinsu, ya'werinsu** nahpatun Istatu Piruanu inapuchin sahkatarinlna tenin: Kuntintusiunke, artihkuru 1°.

Nahpaware ya'ipi piyapi'sa sahkatapisu Istatuke (Wiseru'sa, Wiskaru'sa, Punisiaru'sa, Pa'puyateru'sa, inapwita), kunperikaisu karihka nuninchachin ya'yuhpi Piruanuru'samare, Kanpu piyapiru'samarenta.

### Ma'marechachinta Istatu Piruanu sahkatarin

Nihkaku piyapi'sa tirihchu ya'wetupisu: Nanpikaisu, sanu nihkasu, nu'panena nuya nihkaisu, ku te'wawinanwe pakakaisu, inari pa'kuwitatupuchin nihkapun.

Ya'ipi piyapi'sa sahkatapisu Istatuke yunihkapuna nuya ya'wekaimare ya'yuhpia Piruanuru'sa ku'n nihpirinwenta kanpu piyapi'sa.

Ya'yuhpia Tirihchu kanpu piyapinken nininsu ina'tun ketantapun Istaturi.

Nispitapuna unpuinsuna nininsu ina Kanpu piyapi, a'murinsu, nuninsu, unpu ya'werinsuna, nanpirinsunta, ma'sharu'sa nahterinsu, inawatun nuyahpiachin ya'werinsu ina itere: **Identidad cultural**.





## 2.3 Unpu nihkakaisuna utisia Istatu Piruanu Kanpu Ninanua'waru'sake



65

### Ma sahkatuta nihpi:

Istatu Piruanu  
kuperirin kara  
chinhken  
sahkatu

Puteri Ikutipu, inasu sahkatunen, nina'pi,  
a'paiatun, nihkakasu Kupirinu sahkatu,  
inachachin pa'nin Rikiun Kupirinu'sakenta,  
inaranMunihsipiurusakenta.

Kirihka nina'pi, kirihka yu'na'pi, ina ley nina'pi,  
inachi ina Kunkerisu Ripuperihka.

Puteri Utisia: Inasu sahkatunen, anuyahtakasu  
nanan, ku nihpun ana'intakasu.



## Istatu piruanu sahkaturu'sa:

66

**Sahkatu,  
chindirupi,  
sahkatupike  
ku akete  
na'wekaisuwe**

Piyapi'sa sahkatapisu Istatumare piruanumare, inake kunperikaisu karihka nuninchachin ya'yuhpi piruanuru'samare, kanpu piyapiru'samarenta.

Ya'ipi inake sahkatapisu ya'wetupi chindirupi.

Artihkuru 45° Kuntintusiun teninchi, inake sahkatapisuwita ya'wetupi chindirupi Istatuри keterinsu, nahpapunawe ku na'wepunwe inaupachin ina anutarin, nahpatun ku tewetapunwe ina chindirupi ya'weterinsu. Ihsu nuninsuya'ipimare inake sahkatapisu.

Utisiake sahkatapisu, ya'wetupi ina nihkakaisu, kunperikaisu kanpu Ninanua'waru'sake, ama na'wekaimarewe ina karihka nuninsu.

## Punisia Nasiunar Pirunke



### Sahkatu, Punisia Pirunken nininsu

Ma'mareta, ma'ta unpuwisuta Punisia  
Nasiunar Pirunken, ina kenanariwa artihkuru  
166°Kuntintusiunke.

Punisia ya'weterin sahkatu: Nihkakasu nuyahsha nihkakaisu  
piyapi'sa insesuna nihsarinke, ni'sarinke, nih'kapun  
ya'yuhpia Ley kunperikaimare, Istatu nu'pa a'paikamare,  
kanpua nu'panta nihkapun.

Nahpumantarawatun pa'puyapun, kahtawapun ya'ipi  
piyapi'sa Ninanua'waru'santa. A tananpitapun,  
pu'wanakeran nihkapun, nahtantapun ayatapun piyapi'sa  
ku nuyawenanpipisu.

67

## Ministiriu ya'ipi piyapiru'samare

### Sahkatu, nininsu Ministiriu ya'ipi piyapiru'samare

Nuwitariwa nimantarin Wisekaria ma sahkatuna nihpisu  
kenanariwa artihkuru 150°Kuntintusiunke.

Wisikaru'sasu ni'pi nu'tehken nihkakaisu, nitakaisu  
ya'ipiyamare, inamare nuya nahtantapun, ma'suna  
unpuwisu, tewepisu.

Nahpumantarawatun ku inahsahchinnihkapunwe,  
nimantarawatun nihkapun wamiriasa ni  
tewetupisu, inake tuhpinan nanan yuhkapun  
unpuanuyahtakasuta Wise.



## Puteri Utisiare



### Puteri Utisiare Sahkatu, nininsu

Puteri Utisiaresu, inasu inake kara Puteriru'sake ya'werinsu, nahpuinanhshin Kupirinure (Puteri Ikutipu), Kunkerisure (Kiriha nina'pi), Puteri Utisiar inawitare anuyahtupi nanan, nahtanpachinara, Minitiriu Ya'ipimare, ina kenanariwa artihkuru 138° Kuntintusiunkeran.

Panka nanan, ina kañariterin nitewetupisukeran, inake nanitere ley pu'mukasu. Nahpumantarawatun ninin wamiriru'sanitetwetupisu: Kusharumare, wa'washamare, nu'pamare, sahkatumare anawitantaku nanan anuyahtupisuwe inake nuwantupi inkariteranta kahtawakaisu.

Puteri Utisiarke ya'werin ihsupita: Wisiti Pahse, Wiseti pahse letrados, Wisiti Pahse especializados (Inake ni'pisu un'pamare, tahshinapeitupimare, Ley nuninchachin inapita), Wisi Mixtu itupisu (Na'kun nanan ni'ninsu), WisiSuperiores (Tistituru'sake), WiseSuperimu (Nima wenseterinsu).

68

## Utisiati Pahse

### Wiseti pahse

Wiseti Pahse, sahkaterrin Puteri Utisiare, inake sahkatamare ku nuwanterewe Apukatu nihkakasu.

Wiseti Pahse, anuwantantarin, unpuwinsuna ya'wepisu, nanpipisu ina ni'sawatun inake nanan anuyahterin insesuna inachin nihpisu.



Ina Wiseti Pahse, Kanpu piyapi nihpachin, anuwantantarin, inau anuyahterin, inawa ya'wepisu, nanpipisu, insetana ya'wepisuni'sawatun anuyahterin.

## Wise Ley imarinsu

### Wise imarinsu Ley nuninchachin

Wise Ley imarinsu, sah katerin Puteri Utisiare, inamarechachin istutiarinsu, akachinikamare tiri hchuru'sa ya'werinsu Kuntitusiunke, inaran tratados internacionales Kunpiñu 169 OIT itupisuke.

Wise Ley imarinsu, sahkatu ninin Tiri hchuru'sa, A'na piyapi nahtantupachina kahtawakaisu, nahpumantarawatun a'nari pa'puyarinsu ina Hábeas Corpus itupisu.

Ku'su ya'wepachinawe ina Wise Ley imarinsu, Wise nu'pamare sah katerisu inari ya'wereterin.

## Teripunar Ley imapisu

69

### Sahkatu nihpisu Teripunar Kuntitusiunar

Ihsupitasu panka organismo, kanchise Wiseru'sa inake ya'werin. Inamarechachin istutipi nanan anuyahtakaisu, Uhshake tewepisu piyapi'sa, inawahachin sahkatupisu inake Puteri Utisiareke.

Sah katerin nihkapunchin Wiseru'sa Ley imahpisu ina Puteri Utisiake, A'na piyapi nahtantupachina kahtawakaisu, nahpumantarawatun a'nari pa'puyarinsu, Hábeas Corpus itupisu.

A'nateranta Kanpu Ninanua'waru'sa, ku nihpun, nu'panena tewetupachina, Ley nunpirinwe inapuchin Ley napurin: A'naterahpu waranka nanirinsu piyapi'sari Apukatunwan nininsupitari, nahpuruware nimara, Teripurare Leynuninsu imarinsu tapipun.

## Tiwihsa Ya'ipimare



Tihwihsa ya'yupimare, inawasu sahkatupi Ministiriu Utihsiake, inaran Tirihchu Piyapi'sanken mare, ina mahtupi Putiri Ikuteke. Ya'wetupi sahkatu nihpisu Piyapi'sa kahtawarinsu nitihwihtikaimare inake.

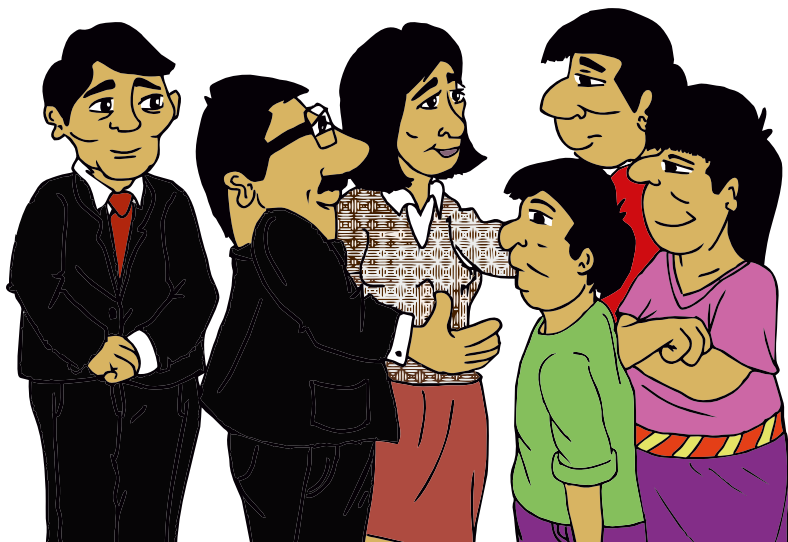
70

### Tihwihsa ya'ipimare

Inake a'chinin, kahtawaterin nihkakasu: Kusharumare, nu'pamare, sahkatumare, inake tihwintirin piyapi'sa ku na'kun tewetupisutirihchunen.

Ina Tiwihsaya'ipimare, naniyunkirin Tiwihsuru'saya'wetkasu inamarechachin nihpisu Kanpu ninanua'waru'samare sahkatasku.

## 2.4 Wa'anú'sa piyapiru'samare ninanua'waru'samare sahkatu ya'wetupisu nihkakaisu



71

**Sahkatu nihpisu,  
wa'anú'sa sha'wipisu  
intuaransuna we'sapisu**

Ya'ipi wa'anú'sa sha'wipuna intuaranta we'saransu. Inake a'nukapuna karihka ya'wetupisu Ihtaturi. Nininen, ma karukuta ya'weterinsu inake ya'weapun. Ina nahtanpachina a'nahkeni ina a'nupuna.

**Nuyahsha  
ninuntupisu**

Ya'yuhpia wa'anú'sa Istatunken nihpisu, nuyahsha ninuntapun ninanua'wa wa'anú'sare, inawanta nituhtakaisu inta ina nanan anuyahtapun, inawatuna ina saahkatu nihsapisu, tirihchu pa'puyakaisu.

### Anuhterinenpuchin- nininsu

Ya'ipi Wa'anú'sa anuhtepuchin nitapun kanpu piyapisa, nuwitakaimare tirihchunena, ina nanan anuyahtupike ku nihpun inapuchinta nihpirinwe, Ina wa'anú'sa kunperikaisu ya'werin, inake nihkapuna unpuaunata sahkatupike: kachinitakaisu, sha'wirapikasu, Tiwihtikaisu ku ana'intakaisu nihpun.

### Ya'werinsuchachin, nanpirinsuchichin nihpun ma'sha

Ya'ipi wa'anú'sa kunperikaisu ya'werin Ley teninsu ihu tratados internacionales Kunpiñu 169 OIT itupisuke, Declaraciones nininsu, inaran Kuntitusiun Leyes Istatunke, inake nispitakaimare tirihchu ninanua'waru'samare ya'werinsu, Istatu Ninanua'wa nahpuinanchin ninispitapuna nanpipisu.

### Sha'witeinenpusu nanan ya'werin

Ya'ipi Wa'anú'sa a'narumarachin nihkapuna sahkatu ina kanpu piyapi pa'puyakamare, nahpumantarawatun sha'witapun unpu tinputa wa'kiapun ina nanan anuyahtakamare.

### Nuyahsha kepatupipuchin nininsu

Puteri Utislar, nuyahsha, uhshahkeran sha'witapun kahtawakamare inake kanpu piyapi nanan ya'wetupisu. Puteri Utislar Tiwihtirinsu Ya'ipi, nuya atintikasu, kepakasu ma'ta ina nihkapuna inake kanpu piyapi ahtintikaisu.



## 2.5 Wa'anú'sa na'kun nanan ya'wetupisu ku nu'tehken sahkatu nihpachinarawe



73

Wa'an Istatuke sahkatupisupita (Wise, Wisekaria, Tihwihtirinpusu ya'ipinpua, Punisia nihpun) ku kunperipachinwe pakakasú a'nake sha'wirapikasú inari ana'intakaimare ku nihpun te'yatakaimare inakeran.

### ¿Unpuin nananketa?

Ihsupuchinke ku kunperiwachinawe, ihsupita Ina:

- Ku nuyawe pu'tupachin a'na Istatuke sah katerinsuari a'na kanpu piyapi.
- Na'kun, na'kun wa'kiwachinara a'na nanan anuhyatakaisu
- Ku nispitapachinawe ya'wepisuchachin nininsu, nanpiwisuchachin nihpisu: (A'muhpisu, nunpisu, unpuina nihpisu, nani ma'sha nahtepisu)
- Ku nauyawe sahkatawachina, na'kun iwatawachina.

## ¿Ma wa'anta inaurinsupita nihkapun nihka?

- Wiseru'sa ihsuari nihkapun: ODECMA itupisuari (Oficina Desconcentrada del Control de la Magistratura)
- Wisekaru'sa ihsuari nihkapun: Uwisina ni'ninsu inake Ministiriu ya'uwimare itupisuari.
- Punisiasu ihsuari nihkapun: Uwisina Inpituru itupisuari.
- Tiwihtupisu ya'ipi piyapi'sa: ihsuari nihkapun: Iwahturari itupisuari.

## ¿Unputapunata inautuwatewa nihka?

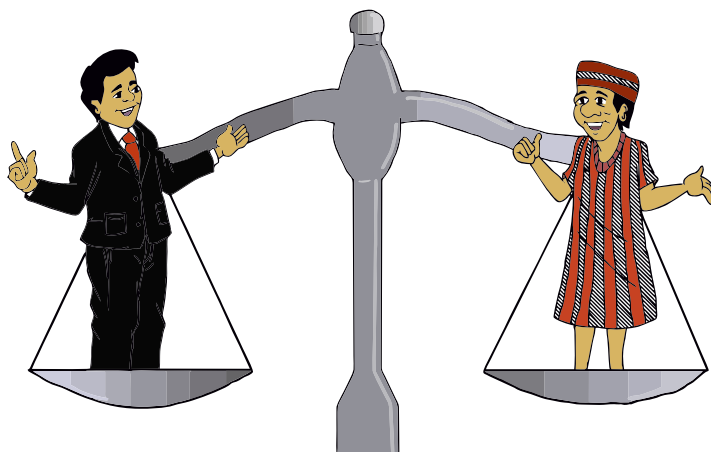
74

- Inake nihkapuna ya'werin kirihkake ina tewerinsu.
- Inautupatewa ku akehte inawapunwe.
- Inake ana'intapuna ku kunperipachinwe. Ku nihpun apaweretapuna, sahkatunen uhseretapuna, ku nihpun uhkuwichinapuna na'kun na'kun tewepachin.

# KAPITURU KARA

Piyapiru'sa, ninanua'waru'santa  
tirihchu, sahkatu ya'weterinsu,  
nihkakaisu

Ihsu kapituruke sha'wirin Tirihchu kanpu piyapiru'sa, kanpu sanapiru'sa, inaran Ninanua'waru'samarenta ma sahkatuta kunperipuna inapita ya'werinsu.



### 3.1 Sahkatu nihkakasu Istatu kanpu piyapiru'samare inaran ninanua'waru'samarenta

Ma'marechachinta Istatu Piruanu sahkatarin: **Piyapi, nitihwihtikamare, inaran nispitakaimare nanpirinsu, ya'werinsu** nahpatun Istatu Piruanu inapuchin sahkatarin.

Ya'kuwiauna kanpu ninanua'waru'sa, nuwitapuna unpu ya'wepisuna, unpu nanpitupisuna, nahpumantawatun wa'anu'sanenata.

Nispitakaisu Tirihchuru'sa a'naya 'a'naya, inaran wentunen kanpu piyapi'sa ya'wetupisu ina kenanariwa **Kunpiñu 169 OIT itupisuke**



Usekateru'sa, inaran Puteri Utisiare, inawitari nihkapuna wa'anu'sa kunperikaisu ya'werin Ley teninsu. Ihsuwita ina **Tratados internacionales Kunpiñu 169 OIT itupisuke, Declaraciones nininsu, inaran Kuntitusion Leyes Istatunke**, inake nispitakaimare tirihchu ninanua'waru'samare ya'werinsu, Istatu Ninanua'wa nahpuinanchin ninispitapuna nanpipisu.

Nahpumantarawatun, ihsupitakeran ya'weantapi, inawanta ni'pi kunperikaimare, ihsuwita ina:

- Urekanu de control de convenios, ina OIT itupi.
- Kumisiun, inaran Kuriti tirihchuru'sa piyapiru'samare ni'pisu.
- Inaran a'na ya'wantarin Kumiti inawanta Tirihchu piyapiru'samare ni'pisu, inke na'a nakiunusa yamupi.

Inawa nihkamare, nahtanamare ku nuyawe sahkatuimare, ku sahkaiyawe. Nuwantere kanpuwa ninanua'wanenpua nuyahsha niwentunatawa ina nihkakasu, inamare nuwantere Apukatu, ina nine ihseke Piruke, ku manta nihpachinarawe.

## 3.2 Tiriychu kanpu piyapinken



78

Kanpu piyapinta, unpuina a'na piyapi tiriychu ya'weterin inapuchin inanta tiriychunen:



Kanpu piyapinta nahpuinahchin a' nawita Piruanuru'sapuchin:

Kanpu piyapinta ya'weterin ina tirihchuchachin, nahpuinahchin a' nawitapuchin...

Nahpapunawe kanpu piyapisu tirihchu nuya, nuyapuchi ya'weterin:

- Tirihchu sha'wikasu intuaranta inasu, pewenan ku pewenanwen.
- Tirihchu unpuina nanpikasu, ya'wekasu.
- Tirihchu ku ayatakasu unpu ya'weterinsu, unpu nanpiterinsuna.
- Tirihchu a'murinsu a'muhkasu.
- Tirihchu nunkakasu nuninsuke.
- Tirihchu nihkakasu, nahtekasu nahterinsu.
- Tirihchu Kirihka nituhtakasu, ninunentakasu, sahkatu ya'wetakasu, nuhya ya'wekasu, a'nawita Piruanuru'sapuchin, nahpapuanawe nanpipisu, ya'wepisu inturansuna.

79

Ya'ipi ihesu tirihchu kanpu piyapi ya'weterinsu, Istaturi nispitapun, inseranteranata nihpirinwenta ina kanpu piyapi.

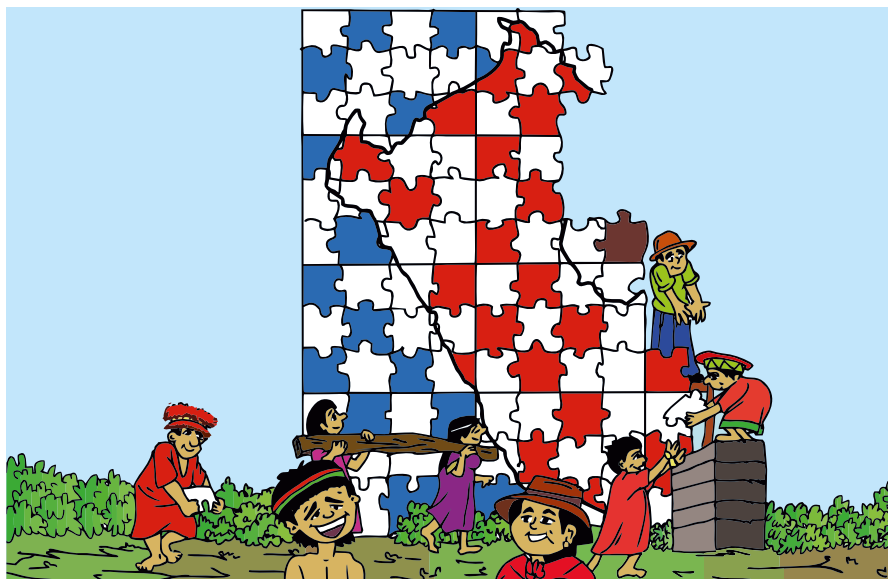
Nahpatun Kanpu piyapisu tirihchu nuya, nuyapuchi ya'weterin, ina wa'anu'sa nihkakaisu na'kun ina kanpu piyapi nanan yawetupachin, inamare ya'weterin:

- Tirihchu sha'wikasu intuaranta, pewenan ku pewenanwen.
- Tirihchu sha'witakaisu ma'mareta ina inautapi.
- Tirihchu sha'witakaisu unpu nitihwintiapunta.
- Tirihchu ya'wetakasu Apukatu.
- Tirihchu ninanuawanan, wamirianenpita nituhtakaisuya'weterinsu panka nanan.
- Ma nanankesuna nunsarin yunkirinsu, wa'anu'sari nahtanakaisu, nispiyakaisu (Punisiari, Wisekariari, Puteri Utisiari)..

lhsupita tirihchu ya'werinsu ya'ipimare, kemapiru'samare, sanapiru'samare, ina ni'newa pihkeran inaran niantakasu, nuya nihkakasu ma tirihchuta ahkete kanpu sanapiru'samarenta inawamarenta ya'werin nani ya'nan yunkirewasukeraware, inakeran inawamarenta tirihchu nuya nuyapuchin inawanta ya'wetupi ina ihsu nuwitakasu:

- ATirihchu nispitakaisu ya'werinke, ya'werinke inaran a'naparihti pa'ninke ya'werinkeran.
- Tirihchu karuku ya'wetakasu, ketakaisu ninanua'wanenke.

### Unpu nanpirewasuna, unpu ya'werewasuna ina nispita'inenpua



Nahpuinahchin, nihkakamare kanpu piyapinpua, inaran a'na piyapi ku kanpu piyapiwe nininsunta, inamare kanpuwanta wa'anua'na nispitainenpua, unpu nispitaunenpuatanihka, ihsupuchin. Kanpu piyapinpuasu, ninanua'waru'sake ya'werewa, nihsha kanpuwasu nanpirewa, nunewakeran, ma'sharu'sa nahterewakeran, a'na yuhse ya'weterewakeran, nihsha niwentuantewa



ya'werewasu, kurihkimarenta, nihsha sahkaterewasu. Intuaransuna we'newasu, ina ya'ipi nispaitawachinenpua, intintuwachina nahpuruware ya'werarin nahpuinahchin nihkakasu.

## Tirihchu ya'weterin nu'ten sha'wikasu inserasuna



81

Ya'ipi piyapi'sa, sanapi'sa kanpupiyapi'sa nininsu ya'weterin tirihchu nihkakasu, nunkakasu un'tehken, **ku tapanakasu ya'werinwe.**

Ihsu Tirihchu nanitere inapuchin nihkakasu ku'ta kanpu ninanua'wakenta ya'wepirewe.

Sha'wikasu nu'tehken, ku tapanakasuwe, nahpa'a'na, inaupatewa nispitaunenpua ku kanpu piyapi nihpisuwe.

## Tirihchu ahtintinenpuasu

Ya'ipi sahkakupisu Istatuke ya'wetupi sahkatonena ahtintinenpuasu inaran nispitainenpuasu.

Wise, Wisekare, Punisia, ku nihpun Tihwinsur ku nihpun a 'na wa'anu'santa, a'na kanpu piyapi nanan ya'wetupachin, ihsupuchin nihkapuna:



- A'narumarachin ahtintikaisu ya'werin.
- Kanpu piyapi kirihka pu'murarinsu Istatuke nihkakaisu, ama ahkete wa'kikamarewe.

### Tirihchu kanpu sanapiru'sa ya'weterinsu

Irahkakeraware kanpu sanapiru'sa ku nispitapiwe nanpirinsu, ya'werinsu, ya'yupi Piru ru'teke, nahpa-tun ayantumakasu ina kanpu sanapi tirihchunenanta:

- Nispitakaisu ya'werinke, intuanta pa'ninkenta.
- Nispitapuna wa'anu'sa Istatuke sahkaturisuari.



- Karuku ya´wetakasu ya´werinke, Istatukenta
- Istaturi a´pihtakakaisu sanapiru´sa tirihchunena, mare, unpuina kemapiru´samare tirihchu ya´werin inapuchin, sanapiru´samarenta ya´werin tirihchu.

## Tirihchu nuya ya´wetakamare



83

A´natawerin ni´patewa napurinsu: “Derechos sociales y económicos” ina a´nataweri ku intintirewawe: Inachi napuapun tehsarin tirihchu karihka nituhtakamare, ku kañuruwatunin ya´wekasu, nuyanachachin ya´wetakasu, sahkatu ya´wetakasu, nuyanpiawayanahrinsu tanan ya´wetakasu.

Ihsu ya´ipi tirihchu ya´weterin kanpu piyapiru´sa, ayunkikasu nispiritainenpua, nahtanakasu Istatu kahtawainpuamare.

Ihsupita tirihchu ya´wepirinwe, ihperawanta ku ma´sha ya´weterinpuawe, ku pupperi ayarinwen, ku kurihki ya´weterinpuawe kanpu piyapinpua.

## Tirihchu ya'weterinpua Kirihka nituhtakasu, ya'werewasu chachin, nanpirewasuchahin

Ya'ipi kanpu  
piyapiru'sa ma'sha  
sha'witawachina, ki-  
rihka a'chintawachin  
Istaturi ketarinsu, inake  
nispitapuna unpu  
ya'wetupisuna, unpu  
nanpituwisuna:

- Inawa nanan  
nunpikechachin  
a'chintapuna.
- Utilizando ejemplos de la realidad de las comunidades. Unpu  
ya'wetupisu ninanua'wake ina ni'sawa tuna a'chinpuna.
- Intintirawatuna, nispitarawatuna nanpiwisu, ya'wepisu.
- A'nutawatuna ma'sharu'sa ya'werinsu ya'werinke ina  
a'chintakaisu, ina nuya nuya nininsu.



Nahpatun los programas ni'sapisu a'chinaimare, yunkikaisu ina  
wa'waru'sa kanpunanke nunpisu, nituhtupi sha'wiru'sa, nuwitupi  
ma'sharu'sa, chinirupi ya'wetupi, yunkipi unpu nanpitakaisu.

Ihsuchi a'na, kanpu ninanua'waru'sa nanitere nuntakasu, Pedagógicos  
inaran Universidades, wi'nanpuwita, sanapiru'sa wa'wina istutiakaisu,  
inake inawa nanpiwisuchiachin, ya'wepisuchiachin kirihka nituhtakaisu  
ina yunkikasu.

**NAHPATUN ISTATURI  
KETARIN KIRIHKA  
NITUHTAKAISU,  
INSETANA,  
UNPUINTANA  
YA'WEPISU,  
NANPIWISUCHACHIN**

Iseke tenin: Istatu yuhkapun kiritka  
nituhakaimare, insehkesuna ya'wepi  
inake programas inawa yuhkapuna  
a'chin unpuinsuna ya'wepisu,  
unpuinsunanpiwisukechachin,  
nahpatun A'chin na'piru'sa,  
inake ya'wepisupitarahchin,  
nuwiru'sarahchin, inawa nanan,  
kahtu nanan nunpihsuwitarahchin,  
inakesahkatakaistu ya'werin.

**Nuya ya'wekamare, kiritka nituhakamare, inake  
kanpua nuhya pu'chinenpua**

85

Kanpu piyawinpua  
tenewasu, kechinenpua  
kiritka nituhakamare  
kanpua nunewakechachin,  
unpuinsuna ya'werewa,  
unpuinsuna nanpirewa.  
Inauchachin tanan  
nimiriuru'santa  
kamaikasu ninunenakasu  
ya'werewake.



## Sahkatu, sikuru ya' wetainpusu

Istatu perihkuhpa'in kanpua sahkatunenpuamare, ahkete sakatu ya'wein kanpuamare, insesuna ya'werewa, unpuinsuna ya'werewake. Nahpatun sah katu ketawachinenpua nispitainepua, nuwantere wasu sahkatu:

- Ina sahkatu ketawachinenpua inake nispi tainenpuatirihchu ya'werinsu kanpuamare sahkatamare ya'werewake.

- Ina sahkatarewake ni'inenpua ama na'kunkeware asahkachinenpuasu, (inautu pachinenpua sha'wikasu Minitiriuke

Sahkatumare nininsu, ku nihpun ina ni'pisu)



- Istatu yunihkapun ya'wetainpuamare kanpuanta ahkete nituhtakamare (Políticas y planes de profesionalización) ma'sharu'sa nituhterewasupita apa'china (yu'me, sa'ya, shunpi, tehshi, inaran na'kun ya'werinsupita), inakeran kanpuwanta na'kun ma'sha ya'wechinpua.
- Sikuru ya'wechinpua, ama kañuruwatamarewe, nuya nanopikamare.



## Tirihchu ya 'weterinoua puritihkake mahtakasu

Ya 'yuwinpua kanpu piyapinpua mahtakasu, sahkatasu purihtikake. Inamare ihu tirihchu ya 'werin:

- Suhwerakasu.
- Tirihihtapun ma 'shamaresu wa'nu 'sari ketuwachin
- Piyapiru 'sari kahtawapun ina elegido nihkakamare.
- Karuku ya 'wetakasu uwhsinaru 'sake a 'nawitapuchin.

Nahpumantarawatun mahtapun kantitahtu nihkakamare: Arkanchimare, Munisiparemare, Nihkiunmare, inamare, ya 'wetakasu piyapinenpita minimo 15%, inapuchintenin kirihkaru 'sake (Ley de Elecciones Municipales N° 26884 y la Ley de Elecciones Regionales N°27683) inake a 'nutarinenpua kanpuamare.

### 3.3 Tiriychu kanpu ninanua'waru'samare



**Kuntitusiunkeartikuru 89°** inake tenin: Kanpu ninanua'waru'sa ya'weterin, ku ayarinwe, personería legal itupisu, inachi ya'weterinpua tiriychunenpua nahpapunawe a'napitakeran nuya nuya. Nahpatun tenewa Kanpu ninanua'wa, nampikasu, nuya pu'teinenpusu.

Ina tiriychu nihkeramatakasu nahtantakasu lstatuke, ina nihkapun wa'an, Kanpuwari wayunawatewa nanpirewasuchachin, ya'werewachachin ni'tun.



## Wentunen kanpu ninanua'wa tirihchu ya'weterinsu

**Kanpu ninanua'waru'sa ya'weterin tirihchu inauraihchin yunirinsu unpu su'sukasuna ya'wepike:** ihsupitake ina: Kurihki yunihkasu, ma'sha ya'wetakasu, nuya ya'wetakasu nanpirinke. Ina nihkakasu Istaturi kahtawapun, ni'sawatun unpu ya'wetupisuna, unpu nanpisupitana, nahpumantarawatun mahtakasu sahkatakasu kunsu rinkiunke.

Nahpatun, nuya, nuya a'na ya'werin Tirihchu Nahtanainenpuasu, (Derecho a la Consulta Previa e Informada), Sha'witainenpuasu, ma'sha sahkatusu na'kun nihkakaisu yunkipachina.

Kanpu ninanuawaru'sa ya'wetupi tirihchu kuntururakaisu nu'panena, istaturi nispitakasu. Nahpatun ku nuyawe ninanua'waru'sa te'yatakaistu, uhkuikaistu ya'wepikeran. Nahpumantarawatun tirihchu ya'weterin nuyahsha nitakaisu, sahkatakaistu, nararu'sa, ya'kuru'sa nani ma'sha ya'werinsu tananke, inake a'pihtapun, inakeran kamaikasunta ya'werin sahkataupike.

## Tirihchu ya'weterinpua nahtanakasu Istatu, ku nanitupatewawe nanan anuyahtakasu nihpachin

Ya'ipi kanpu piyapiru'sa, kanpu sanapiru'sa, kanpu ninanua'waru'santa, ya'weterin, tirihchu ya'werinke, insena ina kanpu ninanua'wa ya'werin, ina Istatu nahtanakaisu Istaturi nanan anuyahtakamare, pa'puyakasumare, ku nuyawe nanan nitapachina, ina piyapi ku ya'wewanwe nihpachin, inapuchin nihkapuma.

Nihpunawe nanan ya'wepachin anuyahtakasu ya'werewakechachin, kanpuara, ni'sawatewa, unpu nanpiterewasuna, unpu ya'weterewasuna ina ni'sawatewa nihkariwa, ninanua'wanepuake.

Inapuchin nihkapuma nanan anuyahtakasu nihpachin, ketantariwa unpu nanpiterewasuna, nahpumantarawatun tirihchu ya'weterewasu.

Nihkapunawe nituhtakasu ya'weterinpua ma'suna nihkaku, nispitakasu nu'panenpunta, ina tenin **Kuntintusiunke artihkuru 149°**, ina ya'ipi Istatu wa'anusari nuwitupi, nituhtupi.

Kanpu wa'anusa ninanua'waru'sake ya'wepisu Ley,  
**Kuntintusiunke artihkuru: 149°**, inari ka'tanin, kahtawarin  
ina nihkaimare, nanan anuyahtakaisu ya'werewakechachin,  
nahpapunawe, ni'sawatuna Tirihchu ya'weterinsu  
ninanua'wanen.

Nahpumantarawatun ninanua'waru'sa, piyapi'santa inake  
ya'wepisunta nituhtakaisu nanan anuyahtakaisu ina tirihchu  
ya'wetupisu, nihpunawe ni'sawatuna, unpu nanpitupisuna,  
unpu ya'wetupisuna, ina itere: **Justicia Intercultural**, ina  
ihpera wa'anusa nihsapi sahkatupike

## KUNTITUSIUN NUWITERINPUA

**Kuntintusiun Pirunke, artihkuru 89°**, inake nuwiterinpua kanpuwanta piyawinpua ya'werewasu, nanpirewasu. Inachi tehkapun napurin kanpuwanta tirihchu ya'weterinpua tirihchu, Istatu nuwiterinpua.

TIRIHCHU KANPU PIYAPI NININSU NU'TEN  
SHA'WIRINSU

Kanpu ninanua'wasu, inaura ninuwiterin kanpu ninanu. Ina tirihchu unpu nanpirinsu, unpu ya'weterinsuna ya'werinke

91

TIRIHCHU YA'WETERIN NINANUA'WA  
NANPIKASU

Ku kanpu piyapi'sara nanpiwiwe, ninanua'wanta nanpirinsu ya'weterin. Nahpatun Istatu sahkatu ya'weterin ina kanpu ninanua'wa nihkakamare, kahtawakamare, ketakamare, nahpapunawe nispitapun unpu ya'wepisuna, unpu nanpituisu, wa'anu'sanenanta, nu'panenata yunkipisunta. Nahpatuna kanpu ninanua'waru'sa ina piyapi'sanen nuhya ya'wekaisu, ku inkariteranta apihkapunwen, ku inkariteranta aweatuna tihkiapunawe, ku nuwancharapirinwen uhkuwipunwen, ku inkariteranta nanpiransu, yunkirinsu, nuninsu ayateke itapunwe, nahpatun nispitainenpusu unpu ya'weterewasuna, unpu nanpiterewasuna, ku interanta nu'wiainenpuasu ya'werin

## TIRIHCHUYA 'WETERINISTATURIKAHTAWAKASU, PA 'PUYAKASU

Istaturikanpu ninanua'wa nihkakasu, kahtawakasu, ketakasu ama unpu nanpiwisuna, unpu ya'wepisuna ina ku ayatakaisumarewe, irahka, ihpera taweri we'ninke. Ya'ipi ma'sha ya'wetupisu inanta a'pihtakaisu: Ihsuwita ina: Lugares arqueológicos itupisu, nishiru'sa, senuhtewisu, yuhkarintupisu, sanapiru'sa ayaapisu, inakeran na'a ya'werinsupita. Inawita a'nateranta iwatuna kepawachina tirihchu ya'weterin nahtankasu insuarina keparin a'naparihti, ina ayanakasu ya'werinkechachin, Inauchin Ley tenin.

## KU INTERANTA WAYANTAHPUENPUAWE

Kanpu ninanua'waru'sa ina piyapi'sanenta, tirihchu ya'wetupi, ku pu'piyanteranta tewetakaisu, narintakaisu, pinuhkaisu, aninkechachin, ku nihpun pu'wanakeran. Inautuwachina nanitupi pakakaisu tininsiatakaisu Puteri Utisiare'pa. Inautupachina pawerekaisu. Ihsu tirihchu kenanariwa Teripunar Kuntintusiunarke, en la sentecia N° 04611-2007-PA/TC inake

A'na tirihchu ya'wetumantarin, ina ihsu:

## **Tirihchu kanpuara ninewasu, su' sutepuchin nihkakamare**

Kanpu ninanua'waru'sa ya'weterin tirihchu inauraihchin yunihkasu unpu su'sukasuna ya'wepike(derecho a la autodeterminación) ihsupitake ina: Kurihki yunihkasu, ma'sha ya'wetakasu, nuya ya'wetakasu nanpirinke. Ihseke ku itarinpuawe Istatukeran a'putakasu, nimara ya'yuwinpua kemapinpua, sanapiru'sa piruanunpua.

Inapuchin ya'werin ni'tun:

Kanpu ninanua'waru'sa yunihpi, nuwantupi, inawara yunihpi unpu su'sukasuna ihsupitake: Kurihki yunihkasu, ma'sha ya'wetakasu, nuya ya'wetakaisu.

Nihkakaisuinawaranikupirinapunaya'wepike,a'nai'a'nai'ya'wetupike, inake ni'puna unpu pa'puyapunata nu'panena.

Ina kanpu ninanua'waru'sa ya'wetupi tirihchu irahkakeraware ya'wepike, nanpiwike.

## **Tirihchu nuyahsha niakukasu**

Nahpatun:

- Nuyahsha niakukasu, inake ku insha wa'anu'sariteranta apihkaisu nuwanterinwe.
- Yunkikasu unpu sahkatakasu ninanua'wanenke
- Yunkikasu unpu sahkatakasuta nu'panenke, piyapi'sare inake ya'wepisuahchin

## **Tirihchu ya´weterin su´sukasu ya´wepike, yunkirinsuchachin nihkapuna**

Istaturi yunihtapun, kahtawakasu, proyectos su´sukaisu kanpu ninanua´waru´sa. Inake a´paikaisu: Unpuinta yunkipi ihpera, ma´sha nihpike, unpu ya´wepisu, unpu ya´wepisu, unpu ya´wepisu ihsuru´teke tanan kanianawayanahrinke, ama nahpunin ya´wekaimarewe pi´i na´werinke.

## **Tirihchun ya´weterin kanpu piyapi kupirinu rikiunareke yawekasu**

Ya´yuwinpua kanpu ninanua´waru´sa ya´wetakasu a´na kanpu piyapirichachin Kupirinu Rikiunareke.

## **Tirihchu ya´weterin nahtanakainenpuasu, sha´witainenpuasu**

Ihsu tirihchu nuya, nuya kanpu ninanua´waru´samare. Nahpatun, nuya, nuya a´na ya´werin tirihchu nahtanainenpuasumare, sha´witainenpuasu, ma´sha sahkatusu nihkakaisu yunkipachina nihkakaisu.

Ina tirihchu nahtanainenpuasu, ku sahkahtasui, na´kun sahkatu yunkirapike, sha´wichinenpua unputaunenpuata nihka ina sahkatu nihpachina kanpuaru´teke.

Ihsuwita: Karihtiramare, a´pininumare, nu´pa ahkuweru ya´werinsupitantamarenta (Kuri, pihtururiu, ahkete ya´werinsu inaran naranta)

Nahpatun, wa'anú'sa, ya'yuwinpua ya'werewasupita nihsha, nisha parihchike, ma'shasu yunkipachina, tinta akukaisu, ma'shasu pa'a'in tuhpachina, Proyectos, inawita a'nataweri ku nuyawe nitainpuasu nihpachin, sha'wichinenpua nituhtakamare, ama a'nataweri, kanpu piyapinpua ku'wayanakamarewe, ku sahkachahtasuiwe nunkakasu ya'werin.



## **Tirihchu ya'weterinpua nu'panenpua, nihkakasu, a'pihtakasu, pa'puyakasu**

Ku interanta itapunkenwe ina nu'panen a'pihteke. Nu'pa ninanua'wamare nunkakasu nihkakasu nihpachina ya'ipinpua yamurawatawa, nanpirewasuchachin yunkirawatewa yunkikasu.

Ina nu'pa ya'weterinpuasu ninanua'waru'sake, ina intintinkasu irahkakeraware, tatamashunenpua nanpiwitapuna, inawari a'pihtatuna

ya'wepisu, inachachin kanpuwanta ihperawanta, ya'weahrin, inake kusharu manewa, sahkaterewa, inanterewa, pe'irewa, ina a'pihtakasu.

Nu'panenpua nia'awa, a'pihtawa, insesuna sahkaterewa, insesuna ya'werewa.

Ina tirihchu ya'werin nuwiteripua Teripunar Kuntintusiunareke, ina sentencia N° 1126-2011-HC-TC.

## **Sahkatu ya'weterinsu Istatu kanpu ninanua'waru'sa-mare, nu'pa ya'weterinpuasumare, inake nihkapun, nanpirewasu**

Istatu sahkatarin ihsupuchin:

- Kanpuwa nupanenpuake, inake ya'werin nanpirin. Nahpatun piyapinpua inake ya'weatewa nanpirewa.
- La corte Interamericana de Derechos Humanos, un'tehken tenin: Panka teweterinenpua, tewetaunenpua ina nupa irahkakeraware a'pihterewasu, uhseretainenpuasu, yunkiwachina, Istatu wa'anu'sa, nani uhseretupachinenpua, yunkia'awa inake nani ma'sha ni-newa, sahkaterewa, inake nanpirewa, nahpatun ihisu organismo a'pihterinpua.
- Istatu kechinpua tirihchu wa'anentakamare, inairahkakeraware tatamahshunenpuanken ni'tun, ku'mini tihturu ya'wetupirinwen, kanpuwanken niin.

## **Ku ya'werinwen nanan ya'werewakeran uhkuinenpuasu**

Nahpatun ku ya'werinwen nanan ya'werewakeran uhkuwiinnenpuamare, inapuchin nihkakaisu yunkipachina, a'nahtaweri nimara, uhkuinenpuasu a'na parihti, kanpuwa nuwantuwatewa nahpuruware inachin nihkapun.



Nahpapunawe tenin Kunpiñu 169 OIT, a'nahtaweri anahken ninanua'waru'sa nimara, ituwachinpua ihu organización. "Inauchinsu nitakainenpuasu nihpachin, kanpua nuwantuwatewa, ya'were ku nuwantuwatewawe ku inapuchin nihsarinwe:

*"Ku nuwantuwatewawe, inapuchin nitaunenpuasu nihpachin, ya'wein nanan ma'mareta ina inautarinenpua, ina intintimarawatewa, nahpapunawe, nituhtakasu ma'mareta, unpuariwata pihpirarewasu, ma'ta ketaunenpuasu inamare, ina nituhtakasu".*

## **Tirihchu ya'weterinpua ma'sharu'samare tananke ya'werinsu**

Ya'weterinpua nu'panenpuake ya'ipi ma'sharu'sa ya'werinsu kanpuari nihkakasu, sahkatakasu. Ku nanitapunawe se'wakaisu ku kanpuari ketupatewawe. Ku insuteraranta, ku ninanua'wariteranta, tapikapunwe ina ma'sharu'sa tananke ya'werinsupita.

97

Kanpua nu'pa ya'weterewasu, nani ma'sha ya'werin: I'sha, tanan, nani ma'shara'waya ya'werin, inaran kuriru'santa, ina Istatu a'pihtarin, ama na'kun, na'kun a'na parihtikeran inpiriharu'sari uhkuikaimarewe. Ina yunkipachina nahtainenpua, sha'wichinenpua (Consultas previas e informadas)

Nanisu nahtapachinenpua, sha'wituwachinenpua (Consultas previas e informadas), ku ku'chahchin na'kun, na'kun uhkuwipunawe, inake Kanpu piyapinpuanta tirihchu ya'weterinpua sahkatakasu, ma'sha ma'patakamare ina uhkuwirapachina.

## **Tirihchu ya'weterinpua sahkatawachina, ma'sha ma'patakasu ina uhkuwirapachi**

Nu'panenpuake sahkatawachina inamare pawere ma'patakariwa, kurihke, ku nihpun ma'sharu'sa ina uhkuipikeran.

Inamare ninanua'wanenpua nuya tehkariwa kirihkake nishiriwa, ya'yuwinpua nituhtakamare, Ina napurin: Teripunar Kuntintusiunar, inari nuwiterin ihu tirihchu en la sentencia 22-2009-PI/TC.

## **Tirihchu ya'weterin inawara nanan anuyahtakaisu**

Ninanua'wa ya'weterin tirihchu inauraihchin nanan anuyahtakasu, ya'werinke, unpuina nanpirinsu, unpuina ya'werinsu ni'sawatun nanan anuyahtapun, wa'anusari anuyahtapun.

Inake kanpu ninanua'wake yunkipisu nispiritakaisu, wa'anu'sari Istatuke sahkatupisu.

## **Tirihchu ya'weterin nihkakasu nu'tehken, nanan anuyahtakasu ya'wepikechachin**

98

Nitewetupachinara, ya'wepi kapini, ku nihpun a'na ninanua'waru'sare, Istatu tananpitapun inawara nanan anuyahtakaisu, nanpiwisu ni'sawatuna, unpuina ya'wepisu ni'sawatuna, irahka nanpihihsuchachin nanan anuyahtakaisu, ina naputere Tirihchu kanpu piyapinken, ku nihpun tirihchu inauranken.

Ku nanitawapachinarawe, wa'anu'sari Istatuke sahkatupisu inawari nihkapuna, Nihpunawe, inawanta ni'puna unpu nanpitupisuna, unpu ya'wetupisuna. Inamare nuwantupi peritajes culturales o antropológicos itupisu.

Kanpu piyapiru'sa ana'intakaisu, penenakaisu nihpachin, nihkakaisu unpu nanpiterinsuna ina piyapi.

### 3.4 Ma sahkatuta nihpun kanpu piyapi, inaran kanpu ninanua'wanta



**Tinunsiatakasu,  
tirihchunenpu  
anuwitakasumare,  
a  
nispitatakasumare**

Kanpu piyapi, kanpu ninanua'wa tinunsiatakasu Punisiake ku nihpun Wisekariake, nahpunin a'na piyapi pu'tupi ni'patewa, ina ku ninanua'wake manta nihpachinawe. Nahpumantarawatun tinunsiakasu Istatu wa'anu'sa ina kanpu piyapi tewetupachin, nahpunin pu'tupachin.

Ya'ipi kanpu piyapi'sa sahkatu ya'wetupi kunperikaisu, inaran nihkakaisu a'nawitanta kunperikaisu, tihwintakaisu ina artihkuru 38°, Kuntintusiun itupisu.

Kanpu piyapi, inaran kanpu ninanua'wanta ya'wetupi sahkatu, a'napitari nispitaisu, tirihchuya'weterinsu, inaran a'nawitamarenta, ama Istatu wa'anu'sari a'nataweri wa'yantakaisumarewe,

**Yunikasu  
ahkete ma'sha  
nituhtakamare**

Yunkikasu unpu sahkatariwata, ma'ta nihkariwasu ma'sha ya'wepachin

Kanpu piyapi, kanpu ninanua'wa, ya'weterinpu sahkatu nihkaku yunikasu, nituhtakasu ma tiriuchuta, ma sahatuta nihkaku kanpuasu ya'weterinpu.

Ina kenanamare nanitariwa paate nahtantakamare Puteri Utisiake, ku nihpun Ministiri ya'yuwimare nininsuke, ku nihpun Tiwihsa Ya'yuwimare'pa nininsu, Punisiake, inaran na'a ya'werinsupita Istutake, inake nahtantamare ma'sha a'nahken ku intintirewasu.

**Nispitaksu Istatu  
wa'anu'sa**

Kanpu piyapi, kanpu ninanua'wa, ya'weterin sahkatu nihkaku nispaitakasu ya'ipi wa'nu'sa sahkatapisu Istutake.

Ina nispitu tehkapun tehsarin, ina wa'anu'sa nutupachinpuwa, ma nanansu sha'witapachinpuwa nahtanakasu, inake ni nutatewa kankan yunkikamare.

Ina pihkeran kanpuanta sha'witakasu inawanta nispita'innenpuwa

**Yunkikasu unpu  
sahkatariwata,  
ma'ta nihkariwasu  
ma'sha  
ya'wepachin**

Ya'weterinpu sahkatu nihkaku, wa'anu'sa ninanua'wake ya'wepisupita ihsupita ina: Chirinchi, Sahkatu Wa'an inapita Istatu Piyapinenpita inawasu sahkatapisu pa'yataksu, inawanta ya'wetupi sahkatonena nihsapi, a'na taweri ku nanitasui kahtawakasu.

Nahpatun ihepra yunkikasu unpuanta inawanta sahkakupi, unpuanta wa'anenpuanta ninanua'wake ya'werinsunta sahkaterin.

Yunkikasu inaware'kenpu yunkiatewa, sahkaterewa, ninanua'wanenpuwa, urekanisasiunenpuwa apankatamare, ina kahtawarinpuwa Istatu sahkatapisu a'harumarachin nihkakamare sahkatu yunkirewasu.

# KIRIHKA WENTUNU'SA

101

# TIHKINAMEN

Nuya ya'wetainpusu, nuya sha'wikasu, ahnahken nananu'sa, nituhtakamare, ma'ta ina tehkatun napirin.

## Kuntitusiun Puritika:

Ina Ley, Istatu ya'weterinsu, inake ya'yuhpia tirihchuru'sa ya'werin kanpuwamare, ya'ipimare.

## Nanpiterewasu, ya'werewasu nispita'inenpua:

102

Nahpunin pu'terinenpuasu, nuhkaninenpuasu, nu'wirinenpuasu, ku inawapuchin napirewasumarewe, na'kun ahkete ya'werinsu, ina naputupi.

## Tirihchu nihsha nanpirewasu:

Nanan ya'wetupachinpura Istatu nuya pu'taipusu, unpu nanpiterewasuna, unpu ya'weterewasuna, ina ihso derecho intercultural.

**Nihsha,  
nihshamare  
tirihchu  
ya'werinsu**

**Tirihchu ma'shamare nininsu:** Niwiringenpuasumare,  
nahpunin akurinakusu mahsha nihkatuna,  
nu'pamarenta.

**Tirihchu wamiriamare:** Wi'nanpu nuhkumakamare,  
sa'an kemari keparawatan nuhkumakamare,  
wi'nauchachinihsu tehkamare.

**Tirihchu kirihkaru'samare:** Nihsha, nihsha  
kirihkaru'sa uwihsinaru'sake yu'nesu, ku nanan  
anuyahtakamarewe, a'na sahkatumare.

**Nihsha,  
nihshamare  
tirihchu  
ya'werinsu**

**Tirihchu sahkatumare:** Sahkatu keterinensu,  
inamare pawererinensu.

**Tirihchu Pinar:** Teweresu, ku nuyawe ninesu.

**Tirihchu Kuntitusiunar:** Tirihchu  
ya'weterinkensu nuya, nuya nininsu, ihsupi-  
ta ina: Nanpiransu, nuya ya'wekamasu, nuya  
pu'teinensu inamare.

## Tirihchu Pinar

**Tirihchu Pinar:** Ina tehkapun ma'sha teweresu, pahasresu.

**Teweresu:** Ina Istatumaresu ku nuyawe ninansu, ku nuyawe na'kun ninansu, ma'sha tapiransu, ina ni'pachina, kenayatupachinen inake Wiseru'sa ana'interinken, ku nihpun tahshinanpeike pa'saran.

**Teweresu:** pu'piyan, pu'piyan ma'sha teweteransu ina naputupi. Nihpirinwen Istatu inakenta ana'interinken, ku ku'chahchinwe inasu, inamaresu.

## Tirihchu Pinar

**Tinusia:** Ku nuyawe ma'sha akurinmare, tewerinmare, tininsiateresu, ina nahtantakaimare, ya'wepachinsu in-auchin ana'itamare ina inaurinsumare. Ina nihkakamare nanitere nihkakasu nishihtupinan, ku nihpun nunekeran.

**Tinunsiatuna'pi:** Piyapi tinunsiatarinsu ni'pachina a'na piyapi Na'kun ma'sha tapiwachina, tewepachina. Inuarachachinta nihpun tewetupimare, ku nihpun a'na piyapi.nahpatun nituhteke unpuinta ma'sha ni'patan naniteran tinunsiatamasu, inapuchin a'nataweri ni'patan tinunsiatamasu ya'werin.

**Tinunsiarapisu:** ina piyapi tewerinsu nihpachin, na'kun masha tapiachinsu kenanpachina. Nah-pumantarawatun itere piyapi sha'wirapipisu, nani tewerinsu kenanpachinasu Wisekariari.



**Nahtanteresu  
nanan  
anuyahtakamare**

**Nahtanteresu nanan anuyahtakamare:** Inasu kirihkaru'sa ninansu, yu'nansu Puteri Utisiake, inake nahtateransu nanan anuyahtakamare, ku tahshinan peimarewe nihpachina. Ku sahkatu niterinemarewe, ma'sha tapitupachinen, inamare Usekatu Sipirike ina nanan anuyahtakaimare.

**Timantuna'pi:** Piyapi tiimantaterinsu Wise Sipirike, ku piyapi atahshinan peitamarewe.

**Timantawisu.** Ina piyapi timantareke, ikinnanan keran nahtanesuKu sahkatu niterinpumarewe, ma'sha tapitupachinpura, inamare ina ninesu.



**NIHSHA, NIHSHA TUHKUMINTURU 'SA.  
NINESU**

**107**

## **NIHSHA, NIHSHA TUHKUMINTURU´SA. NINESU**

Ihseke nihsha, nihsha kirihkaru´sa, tuhkuminturu´sa a´nutarainken nihkatun, nishitun wa´anu´sa pu´mukamake, yuhkamake, tirihchunen nahtantamake, ku nihpun finunsiatamake ku nuyawe pu´tawachinen.

Ihsu kahtu tuhkuminturu´sa, kahtu kirihkaru´sa: Solicitud de Garantías (Modelo N° 01) y Demanda de Habeas Corpus (Modelo N° 02), yuhkakamare, ku nuwanterewe apukatu wirmakamare

Inaran ihsu karakeran nininsupitasu, inamaresu nuwantere wirmakaisu apukatu. Nahpatun apukaturirahchin nihkapun.

## KIRIHKA 1

### PIYAPI ACHA'EHKAMARE NAHTANTERESU

**EXPEDIENTE** : (dejar en blanco)  
**ESCRITO** : 01  
**SUMILLA** : Piyapi acha'ehkapu

#### SIÑURU: WISE NITUHTUN NINANSU INA NANANMARE

KUSI ISIPINURA TANTI TUHKUMINTU: .....  
. ya'werausu: ....., Kari nihprisintarawe MAURU  
WIRISE TAYAUURI, kema nispitarawatenken itaranken:

##### i. Nininen timantataransu, insesuna ya'werinsu:

KURUNIR PUNIHSIA, KUANSHA PIRI SURIA, ina perahkaisu nininsu,  
punisiake, sha'witakasu insesuna punisiaru'sa nihsapisu, en calle Doza N°  
274 (Piyapi ku nuyawe nitarinkensu.

##### ii. Nahtanteresu

Akurarawe tinunsi acha'ehka'umare tirihchunen ku nispitapisu ni'tun,  
uhseretupi tirihchunen, ku nuyawe akupi, nuniterinwe aninke iratakasu ni'tun  
Mauru Wirise Tayauri, ina mahpi ku nituhtasuwe ina timantararawesu.

##### iii. Tirihchu Kuntitusiunar teweterin

Ina Tirihchu kenane artihkuru: 2 inciso 24, literal f Kuntitusiun Purihtika  
Pirunken. Inake tenin ku interanta mahkapunawe, ku ya'wepachinwe kirihka  
mahkaisu, Wise tehkaware mahkapuna, ya'wekasu nishipisu, ku nihpun  
wa'anu'sa Punisiaru'sari, kenanpachina ma'shasu tewerapachin na'kun  
nahpuruware tenin

##### iv. Ihsupuchin yunkiatu timantatarawe

1. Timantatarawe, nihprisintarawatu Mauru Wirise Tayauri amikunu ni'tun.
2. Ina riuñunkeran pakasu, mahpi punisiari, kepapi ku tuhkumintu  
keparinwe ni'tun, i'wara ahketeran ayaterin nihkasu inaurin

3. Punisia tenin ku ninen ya'werinwen RINIKE, nahpatun ku ihperawanta uhkuwipiwe, tehsapi ninen yunihtarai, ku manaiwe, tuhpinan nahtantarai; tuhkumintunwan, ku tuhkumintunwanwe. Nihpirinwen nani a'na simanatarin Mauru Wirise Tayauri, ku uhkuwipiwe.

4. Ku ya'werinwe nanan Utisikera, ku na'kun tewerinwe nihpirinwe inautapi; nahpatun Puteri Utisiare, a'narumarachin yu'in nanan uhkuikaisumare.

#### **v. Ihsupuchin tirihchu ya'werin**

Timantatarawe ihsupuchin ni'tun: Artihkuru: 2 inciso 24, literal f Kuntitusiun Purihtikake ya'werin ni'tun.

#### **vi. Unputa pawere nahtantarawe**

Munasqampa kayninman hinaqa manan qullqimpi aykayaynin atikunchu.

#### **vii. Unpanta inauchin nihsarawe**

Inauchin ya'werin Kutihku Purihsesare Kuntintusiunareke ni'tun.

#### **viii. Kirihka yu'sarai**

1. Kupia tuhkumintu kahken
2. Kupia tuhkumintu irahkayanen, ina inake nihsarinsu.

#### **ix. Anexos. A'na kirihkaru'santa**

1-A. Kupia tuhkumintu kahken.

1.B. Kupia tuhkumintu irahkayanen, ina inake nihsarinsu.

### **INAPUCHIN NUNAWESU**

A UD. pido admitir a trámite la presente demanda. Kemari amanuteke ihu timantatarawesu.

Ninanu, kahtawini taweri, tuken yuhki nihsawasu, kahtu waranka shunka kahtawini pi'i

## KIRIHKA 2

### NAHTANTERESU GARANTIAS KANPUMARE

SIÑURURU'SA

Kupirinasion .....

KANPU NININENPU

NININNENPU INARAN AHPICHITUNENTA

.....  
INSU NAHSIUNKERANTA: Peruano

TUHKUMINTUNEN NUMIRUNEN: .....

INSETAYA'WERANSU.....

Nuya sha'wiresu kanakaimare ya'weranke.

PI'IHPINEN.....

MAKETASAHKATERAN:.....

INSEHKETA SAHKATERAN: .....

**NININENA TINUNSIARANSUPITA**

NININEN INARAN AHPICHITUNENTA:

.....  
YA'WERINSU : .....

PI'IHPINEN (Tantiake)

.....  
INSEHKETA SAHKATARIN (Nuwituwatansu:

**MOTIVO DE LA SOLICITUD DE GARANTIAS**

Tinunsitarawesu nani taweri pinurinku, tehparranken iterinku, kenanawe pei  
piyuran tahshi ninarinkusu. A'nataweri.

Kankirin aweinkusu, ku tewetupirawe kahsu, inake iterinku ku

inautopatankenwe ku kahpa kankantarawe, tenin un'wipachinkura, Ina piyapi teninchi karichi materawe ma'shasu. Ina ku un'ten nunin, ku yunkirawe a'naruyateranta inaurausu, Nahpatun tenawe ku pu'piyanteranta naniterinwen napuin yunkikasu, pinuinkusu, yunkiyatainkusu tehpakainkusu, ina ni'tun siñururu'sa Kupirinasium, kahtawaku, pa'puyaku kanta ku yunkiahsuwe tehpáwachinku, te'waru'ku iratahrawe.

Nahtanarawe Kupirinasium, niin chinihken Ley teninchachin, sha'wi'in wa'anu'sake, ihu naputarinkusu, yunkiyatarinkusu tehpakainkusu, inachin tenawe nanpiraumare.

NU'TEEN SHA'WIRARAWA, KU YA'WETERINKUWE TINUNSI  
UTISIAREKE, NINAWESU, YU'NAWESU KIRIHKA (SIPIRIKE, PINAREKE)  
IHU NIHSARAUPUCHIN.

---

## WIREMAPUN KEMA

Akuapun kupia tuhkumintunen

Taweri.....



## KIRIHKA 3

### TINUNSIA AWERINAKU NI'TUN

#### SIÑURU: WISEKAR PURUPINSIARE SAHKATARANSU

KAMIRUNKUANSHAISTAPERI KASTICHU Tuhkumintu 012345678  
ya'werausu Av. Los Caifanes 311, tistiritu Laureado, Tihparetamintun  
Amasuna, ya'werausu purisusar kasicha1713, Kema,nispitarawatenken  
itaranken:

Akurarawe, TINUNSIA AWERINKUMARE, ihstu piyapi Aremahihtun Nustanawe  
Pahse, nahtantarawe kañarichina, nahtanchina a'narumaruahchin  
Wisekarianeni tinunsiain Puteri Utisiareke, ina awetuna'pi ihstupuchin ni'tun:

#### 1. INAPUCHIN NININSU

- 1.1 24 nahpuru tawerin, diciembre, 2013 pi'i nihsapasu, wamiriaru'ku  
nihkasu, napita ni'tun, Nistaurantike "Wiria" yawerinsu Av. Los Caifanes  
313. A'na misake ina piyapi u'uhсарinkerаn, ina piyapi Aremahihtun  
NustanawePahse.
- 1.2. Nani sauhta ura nihsapasu, iyaraukeran weksu, kañaririn, yanpirarinku,  
nu'wirarinku. Nah'pumantarawatun mamanuwe teweterin inaran  
wi'nawe nanua'wanuwe.
- 1.3. Nahpuruchachin nahtana'umare pu'kasu, ina siñuru Aremahihtun  
Nustanawe Pahse, siriwisa puteria mahsawatun pukeh, iterinku.  
Nahpuruchachin, chimipi anuterawe. Wamirianupita (sa'awe, wi'nawe  
nanua'wa, mamanuwe, a'shatuwaya), sha'witerinaku inake nuwanta  
tu'tarinku, tanpaeterinku, inake amikunenpitari, wamirianupita  
pa'puyarinku mahpi ni'tun
- 1.4. Wamirianuwe pa'pi punisia sha'witapuna Asintu aramichu, inake  
ya'karia nihsarin ni'tun, inawasui, ina awerinkusu nani pa'ninsu we'pi.
- 1.5. Nihpirinwe, inake sahkatawisu inawa sha'wipi insetana, ya'werinsu,  
tinunsiararawesu.

- 1.6. Pe'shana ya'weterinku muhtuneuke, ya'murawe, inauchin nuhturu tantiarinkuke uhkuwiterinku kirihkake, ina ketarankema.

## **2. IHSUPUCHIN LEY YA'WERIN NI'TUN**

Artihkuru 121 Kutihku Pinar y artihkuru 2° Ley 26682.

## **3. A'NARI NI'NINSU**

- 3.1 Ni'nin, shawirapirin, ihsuari Nupirihu Isiwihteri Nujan, Nistaurantike "Wiria" inanta parahkasu ihsu kachike Av. Los Caifanes 313, Tistirihtu de El Laureado.
- 3.2 Ni'nin, shawirapirin mamaweri, ina nininen chihsika kastichu Sea. Inanta parahkasu ihsu kachike ya'werin en Av. 3 de Enero, Tistirihtu de El Laureado.
- 3.3 Ni'nin, shawirapirin wi'naweri, ina ninien Werita Istaperi Kunkaperi, inanta parahkasu, ihsu kachike ya'werin Av. Los Caifanes 313, Tistirihtu de El Laureado.
- 3.4 Nuhturu tantiarinkusu N° 231-013-13 del 24 de Diciembre de 2013
- 3.5 Nuhturu tantiarinkusu N° 399-021-13 del 28 de Diciembre de 2013
- 3.6 Unpuruhsuna tantiarinkusu, ihsu taweri'sa, 24 y 30 Ñuñu Yuhki nihsawas.

## **NAHPATUN INAPUCHIN NUNAWESU:**

Siñuru Wisekare nahtanaranaken nihke, nahtanteke Ley nunin ni'tun tinunsirarawe Puteri Utisiareke awerinkusu.

---

APUKATU

---

TINUNSIATARINSU

## KIRIHKA 4

Escrito: N° 01

**SUMICHA:** SURISITARARAWÉ  
A´NARUMARAHCHIN, NAHPUNIN  
AWANARU´KUCHACHIN YA´WATU KANTA  
PA´PUYAKU INAPUCHIN NIHSARAWESU

### SIÑURUWISE MIXTO

**URINTA SINTANUYAHPIACHIN**, tuhkumintunwan N° 07877543, ya´werawe inake....., Kema. Nispitarawatenken nunsarawe:

#### I. NAHTANTERESU:

We´sarawe, sahkateranken, nahtanaikensu

A´NARUMARAHCHIN PA´PUYAKU, UHKUWIKU INA PIYAPI KU NUYAWÉ ICHIYA´WERINKUSU, AMA AHKETE INAUCHINKUSUWE, ihšu tinunsia pa´sarín wa´wawe pa´pinmare.

NUWIRIU PARASIU KURE, ihseke ya´werin..... nani taweri aweinku, un´wirinku ni´tun, wa´wawenta inauterinchachin, ya´wein ihsupuchin ni´tun.

#### II. NU´TEHKEN, IHSUPUCHIN

1. Tinunsiararawesu, munshiwe, wara´pu yuhkikeraware, kahtu waranka iskun pi´ikeraware nanpirawe, inake inaupichin, wa´wawe wa´waterin Karin. Nahpururawakeran ku nuyawe ichiya´werinku, wa´wawenta ku na´kun yuhki ya´wechahtapirinwen inauterinkui.  
Nani awarínchi u´uhpachina, un´witeraya kehpariterin, uhshamarenta inauterinku, ikiananterinku, nanan nahpunin nunin, ina ku nuyawe akurinku.
- 2- Nani inapuchin na´kun pií na´werin, nani tinunsia pu´mutupirawe Punisiake, ku manta nihpiwe, nani a papirawe, ku nuwanterinwe pakakasu, ahkete awerinku, un´wirinkukeran niterinku tirihchunuwe ku nispitarinwe.
- 3.- Tinunsiarawe pihkeran, ahkete pinurinku, ahkete aweraranken iterinku, wa´wawe uhseretainkusu yunkirin, nahpatun ,we´sarawe kemahtake kahtawaku kanta.

- 4.- Ama akehte inauhin nanpika'umarewe, ku naniterawe ahkete ya'weka'wasu ku nuwanterawe inaruku ni'tun, nahtanaranken ina piyapi aweahrinkusu, kemari uhkuwike, a'pake, ama ayankinta'nsu, nuya kanta ya'weka'umare wa'waweru'ku.

### **III. IHSUPUCHIN TIRIHCHU YA'WERIN**

Ihsu nahtantarawesu, na'kunLey, ya'werin ni'tun, ihsupita ina:Decreto Supremo N° 0006-97-JUS, Texto Único Ordenado N° 002-97-JUS, y sus modificatorias Ley N° 27306 y N° 27982.

### **IV. KIRIHKA YU'SARAI:**

1. Wa'wawe parihtitanen
- 2.- Kupia tinunsiatarawesu inauhin nanpirawesu
- 3.- Kupia ina nahtantarawesu nanpirawemare
- 4.- Nuhturu tantiarinkusu ina awerinkusupita, nu'wirinkusupita.

### **V. KIRIHKARU'SA:**

- 1.A Kupia tuhkumintunuwe.
- 1.B Wa'wawe parihtitanen.
- 1.C Kupia tinunsiatarawesu inauhin nanpirawesu.
- 1.D Kupia ina nahtantarawesu nanpirawemare.
- 1.E Nuhturu tantiarinkusu ina awerinkusupita, nu'wirinkusupita.

### **NAHPATUN INAPUCHIN NUNAWESU:**

Nahtanaranken, kema, kemari nihke inapuchin nahtanarankensu.

Ninanu, kahtawini taweri, tuken yuhki nihsawasu,  
kahtu waranka shunka kahtawini pi'i.

-----  
APUKATU

-----  
TINUNSIATARINSU

## KIRIHKKA 5

Escrito N° 01

Denuncia Penal por Homicidio

**Siñuru: Wisekar Purupinsiar Pinare**

**NISTURU NURA KUCHA**, tuhkumintunuwe....., ya´werausu ninanu a´wake....., kemahke tehsarawe:

Ihsupuchin kahtawarinpusu ya´werin artihkururu´sake 1° y 11° Tihkirihtu Riisteratipu N° 052, Ley Inankenachin Ministiriu Ya´ipimare, nahpatun tinunsiararawe TEHPATERIN NI´PI NI´TUN, ya´werin nishipi ni´tun artihkuru 108° inciso 1° Kutihku Pinareke, insuwitana tehpetupisu nahtanatawatuma kenayatakasu, ihsupita kanpu piyapi´sai ina Ninanua´wake ya´wepisu inake ya´wepisu.....), ihsupuchin ni´tun:

### 1. IHSUPUCHIN

- 1.1. Iyawe NITU NURA KUCHA, niyarin kara shunka tawerinnihsawasu, Chimiwayan yuhkike, kahtu waranka shunka kahtu piif nihsawasu, peikeran pihpirawatun pa´nin. i´waraya, Kara ura nihsapasu, Ninanua´wakeran.....nahpuruihchin ina ninanua´wake ni´pi piyapi´sari; Nihpirinwe ku yunkiahsuiwe, ya´nurin chimipi, kara shunka taweri nihsawasu Ñuñu yuhkieke, nani pa´pitakaisu nihsapirinwe, shunka ya´piri, ina parihti ya´wepihsuari.
- 1.2. Ina yanutui ni´nai, kenanai aweatuna tehpati, nahpumatarawatun mahkirapinen, sa´purunen matupi, ina yunkiaterei keyasu tehparawatuna matupi paántaimare inawita pa´anpihsuari, nahpapunawe, ku nuwiteraiwe, inake ya´wepisupitariteranta.
- 1.3. Nihpirinwe ku ya´ipi wamiriari´sari ni´piwe, ina pihkeran Purisiarichachin pa´piterin nani nuhtuwaru chanatasu. Nahpatun ynkirai ina na´kun, na´kun nanan ya´werin nihkakasu, nahtantakasu Ley teninchachin.
- 1.4. Nu´tehken nani tinunsiatupirawe Punisiake, Wisekarike ihsuchi kirihka ya´weri nihpirinwen.

Ku manta ya'werinwe, nahpatun nahkeranchachin tinunsia pu'muantararawe, nituhtaúmare, inakarita iyawe tehparin, unpanta wa'anusa ku manta tunpiwe, ma'ta ya'werin, nihka ina tehpatunapire, ma'mareta pu'upi

## **2. IHSUPUCHIN LEY YA'WERIN**

Ihsu tinunsiatarawesu, ihseke ya'werin artihkuru 108° inciso 1 Kutihku Pinare, inake tenin, tahshinapeitakaisu ku shunka a'naterahpu pi'i, pihkeranwe, ina tehkapun tehsarin, shunka a'naterahpu pi'i, ahketeran, piyapi tehparinsu.

## **3. KIRIHKA YU'SARAI**

- 3.1. Kupia tuhkumintu
- 3.2. Kupia tuhkumintu del occiso teninsu
- 3.3. Kupia karihka ina chimipinken
- 3.4. Kupia karihka ina yanupisu yahchapisu
- 3.5. Shawirapipisu, ni'pisuari ina chimipi.

## **NAHPATUN INAPUCHIN NUNAWESU:**

Nahtanaranken nihku sahkatu, nahtantuku, nutehken ina iyawe tehparinsu.

Ninanu, kahtawini taweri, tuken yuhki nihsawasu, kahtu waranka shunka kahtawini pi'i

---

APUKATU

---

TINUNSIATARINSU

## KIRIHKA 6

Exp.

**TIMANTATARAWÉ TE'YATAUMARE,  
TEWANANPITERINKU NI'TUN**

### **SIÑURU WISE WAMIRIARU'SAMARECHACHIN NINANSU**

**SERIA PIRA ANKURU**, tuhkumintunuwe N° 12345678, ya'werausu, ihšu yunkirawesu, kemahke. Nispitarawatenken tehsarawe:

#### **I. NAHTANTERESU:**

Timanatatarawe NI TE'YATA'IMARE, TEWANAPITERINKU NI'TUN, ihšu ina su'yawe, NUPINSARUPAPINICHU, ya'werin .....  
..... NAHTANTARAWÉ, sah'wina, ku ahkete ya'weka'imarewe, nahpumantarawatun, NAHTANTARAWÉ KAHTAWAINAKU, unpuina Ley tenin ihsuke Artihkuru. 483 Kutihku Purisisar Sipiri napurin:

- a) Niin, ihšu tinunsiatarauke, nitihki'in, ta'wanchin, nahpapunawe ku ahkete ma'sha ya'weterinkuiwe, ina sha'witaranken.
- b) Ya'we'in pinsiun kusharumare, kara wa'wauwitarare ihšu nahpu, S/.....,
- c) Ya'we'in kahke wa'waupita, inapuchin kirihkake nishiina.

#### **II. IHSUPUCHIN YA'WERIN NI'TUN:**

Ihseke timantatarinsu sha'wikapun:

1. Unpu tewanapiterinkenta, unpu nunpinterinkenta
2. Se explica cuáles son los gastos de los hijos que justifican la pensión que se pide. Sha'wire unputa kastu ninesu ina wa'waru'samare, ina nu'tehken sha'wikasu, ku nunpinkasuwe
3. Inake sha'wikasu ma'mareta wa'wanpita kemahtake ya'wekasu yunkirin.

#### **II. IHSUPUCHIN LEY YA'WERIN NI'TUN:**

Ihsupuchin ley ya'werin, inciso 1 Artihkuru 333° Kutihku Sipiri, inake nunin tewanapitupachinpara ina nine nite'yatakamare, Artihkuru 348° inakechachin

tenin. Inaran artihkuru 483°, tenin: Nitimantakasu, inake yunkikasu ma tiriichuta ya'weterinkema, ma sahkatuta kahtuya'pinkemachachin nihkakasu ya'weterinkema.

#### **IV. UNPANTA :**

Ihsu timantatarawesu, anuwitarawe, inauchin nuninsu ihu artihkuru 480° Kutihku Sipirike.

#### **V. WISE INAMARECHACHIN:**

Inapuchin sahkatunen imahsaransu, inamarechachin, ina ya'werin ihu kirihkake inciso 2 artihkuru 24° Kutihku Sipirike, inamare sha'witaranken insehkesuna irahka ya'weraisu inaruku ihseke.....

#### **VI. KIRIHKARU'SA YA'WERIN:**

Ihsupwita ina: Kirihka ni manaisu, tewanantepiterinkusu, wa'waupita ma'sha nuwanterin ni'tun.

#### **NAHPATUN INAPUCHIN NUNAWESU:**

Kema siñuru Wise, kahtawaku yu'ke ihu kirihka timantatarawesu, kirihkaru'sa ya'werin ni'tun, ya'ipi kastu nihkakasu irateresukeranchachin inamare, pihpikamare ina nanan anuhtakamare, nanisu pihpipachinsu tehkakamare, pihpirin ihu timantatupisu, unpuna kastu nininsu nihkakamare.

Ninanu, kahtawini taweri, tuken yuhki nihsawasu, kahtu waranka shunka kahtawini pi'i.



# A'NA KIRIHKARU'SAKERANTA UHKUWIPISU

Kutihku Sipiri

Kutuhku Pinare

LKutihku Purisisare Sipiri

Kutihku Purisisare Kuntitusiunar

Kutihku Purisisare Pinare

Constitución Política del Perú. Kuntitusiun Puritika Pirunken

**Kunpiñu 169 OIT itupisuke**, Tratados, Internacionales

Nasiunu'sa yamurawatuna yunkipisu sobre los Derechos de los Pueblos

Indígenas.

Tihkiritu Ley 22175, Ya'yuwu Kanpu Ninanaua'waru'samare, Piruke  
ya'wepisumare,

Tantiyapisu, unpu sakatakaisuna Ustisiake Kanpu ninanua'wake, ina  
ya'werin San Martinke, kahtu waranka shunka kara pi'i nihsawasu ina karihka  
nihpi



PROGRAMA FINANCIADO  
POR LA UNIÓN EUROPEA